



Visit Saarijärvi

Get carried away
in the moment.



SAARIJÄRVI REGION
TOURISM GUIDE

Fall in love with Saarijärvi

We invite you to visit our beautiful and vibrant city of Saarijärvi, in northern Central Finland, located just a short 45-minute drive from Jyväskylä. We are known for our stunning lakes, lakeside living and natural tranquillity. In our city, you will experience modern countryside life. With plenty of culture, sports possibilities, jobs and education, it has everything an active resident or visitor may seek. Saarijärvi combines the comforts of urban life with the beauty of nature in a way that suits you.

This brochure will help you find meaningful destinations in our city, public and private services, and activities for the whole year.

Saarijärvi offers a wide range of activities and events for all ages. A good example of a destination targeted to families is the Veijari Activity Park, where there is plenty to do and see, even for several days. Other nice destinations include the Pyhä-Häkki National Park, the Julmat Lammet, Haikankärki and Kulhanvuori, which offer great nature experiences all year round. In the winter, Paavonrinteet ski slopes and trails offer fast-paced activities in snowy landscapes.

From May 2024, a new Cityspotting adventure will be launched in Saarijärvi. This browser-based concept combines urban culture, nature and sports, offering more than 30 unique spots that reveal the hidden treasures of the city. Unforgettable experiences and new perspectives on Saarijärvi can be expected. And this is completely free for everyone!

In the summer in Saarijärvi, you can enjoy a variety of events, such as the traditional Kirmot, which offers a high-quality line-up of performers. There are also a number of musical and cultural events. Runeberg Park's free Torstaikeikat events are also popular. For cultural attractions, I recommend the Saarijärvi Museum, Juhola and Art Gallery Ahku.

You will find more things to do in this guide and event calendar, the city website, and the Visit Saarijärvi website.

Many of us have fallen in love in Saarijärvi – and with Saarijärvi. Why not you too?

Satu Autiosalo
Mayor





CULTURE

Museum
Stone-Age
Village
Exhibitions
Destinations



PAGES 6-17

ACCOMMODATION



Hotels
Country Houses
Cottages
Camping



PAGES 36-43

THINGS TO DO



Activities
Sport Facilities
Equipment
Rental



PAGES 22-35

DINING



Restaurants
Cafes



PAGES 44-49

SHOPPING & SERVICES



Shopping
Gas Stations
Night Life
Tourist Information
Services Catalogue



PAGES 50-57

NATURE DESTINATIONS

National Park
Hiking / Camping
Nature Trails
Canoeing and
Rapid Trails



PAGES 18-21

MAPS & INFO

Downtown
Tarvaala
Town Map
Nature Dest.



PAGES 58-69



1628 The area was formed into Palvasalmi Chapel Congregation.

1690 The name Saarijärvi became established.

1628

1639

1690

1823

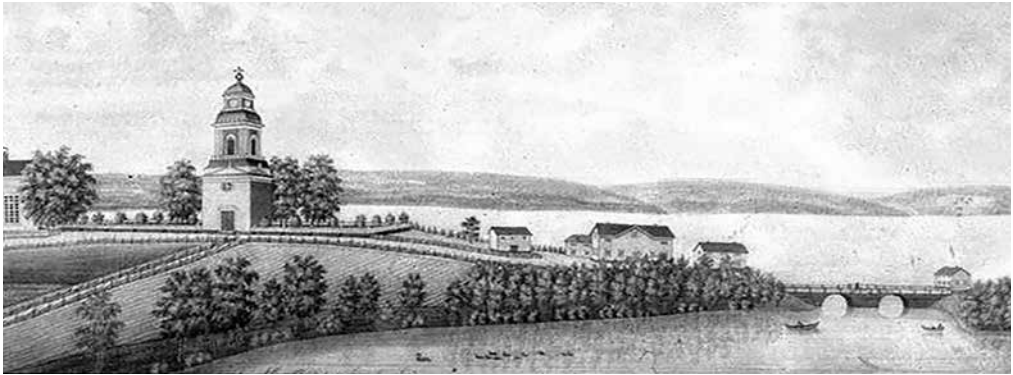
1639 Palvasalmi became an independent congregation

1823 Finnish National Poet J. L. Runeberg lived in Saarijärvi in 1823-1825.

SAARIJÄRVI - from a bark bread parish to a lively city

Saarijärvi is among the oldest settlements in Finland – a settlement over 10,000 years old has been discovered in Selänpäänjoki of Pylkönmäki. Slightly more recent settlements have been found in Eerola of Kalmari and at the northern end of lake Summasjärvi. A unique hunting pit trap system has been discovered in the region, which indicates a highly organised community.

This community spirit has lasted throughout the millennia, as the folk of Saarijärvi are a close-knit and warm community even today.



Our national poet Johan Ludvig Runeberg lived in Saarijärvi during the years 1823-1825. Here the young poet encountered a new and fascinating environment, which experience was later distilled into fine poetry. **Farmer Paavo** was Runeberg's first significant poem about a Finnish-speaking man of the people. It was published in Runeberg's first collection in 1830.



Farmer Paavo even has his own monument in Saarijärvi; the bronze Paavo statue by **Heikki Varja** was christened in 1961 in the church park.

Some of the nature that was around in Runeberg's time has remained in an almost untouched state in the present-day Julmat Lammit nature conservation area. Runeberg was an avid hunter who would roam these majestic pond landscapes in search of game, which hunting trips have been described in his Saarijärvi article. The area can be explored by hiking along the Runeberg trail.



The Municipality of Saarijärvi was established.

1866

1867

Tarvaala Agricultural Education School was established.

Saarijärvi became a town.

1986

Saarijärvi celebrated its 150 years as a municipality, 30 years as a town anniversary.

2016



Saarijärvi



Present-day Saarijärvi is a beautiful, appealing, and healthy environment in which to grow – it is a city full of entrepreneurs, expertise, and culture in northern Central Finland.

One of our best parts is the wonderful down town area, which has been constructed on an islet in the middle of three lakes: the Saarijärvi, Lumperoinen, and Herajärvi lakes. Here, you can live by a lake and in the middle of a city at the same time!

In addition to wonderful landscapes, Saarijärvi offers its inhabitants, summer guests, and other visitors a wealth of culture services and recreational opportunities.

Our most significant cultural destinations include the **stone age village**, showcasing the oldest known human settlement in Finland, **Juhola**, which is the childhood home of the talented Tapper family, and the **Saarijärvi museum**, offering cultural history and art exhibitions all year around.

There are several interesting natural historic hiking and skiing destinations in Saarijärvi: the **Pyhä-Häkki national park**, the **Kulha nature conservation area**, and the **Julmat Lammit ponds**.

You are welcome to enjoy the beautiful nature, waterways, and culture of the Saarijärvi culture parish – in the heart of Finland!





Saarijärvi Basic Visual Arts Exhibition in the museum's Autere Hall, named after the sculptor Hannes Autere.

THE SAARIJÄRVI MUSEUM

Saarijärvi Museum is full of art experiences and history

The museum arranges exhibitions and documents, records and researches local knowledge for future generations. The museum work started in the 1950s by the Saarijärvi-Seura Association provided the foundations for the museum founded in 1986, which is professionally managed by the City of Saarijärvi. Locals and travellers have been able to enjoy temporary exhibits for over three decades in the museum's main building, which was opened three years later. The main building was renovated and expanded in 2019.

Creativity from nature - Saarijärvi Basic Visual Arts Exhibition

The new Saarijärvi Visual Arts Basic Exhibition presents art by Saarijärvi's resident artists and artists born in Saarijärvi over a period of about 100 years. The exhibition includes art produced in Saarijärvi or related to Saarijärvi by artists from outside the region. The exhibition is divided into three parts: portraits and self-portraits, landscapes and contemporary art, with the aim of presenting a broad range of artists, periods and artistic movements. The exhibition works are from the collections of the City of Saarijärvi, Beda, Katri and Aune Herala Foundation and the Saarijärvi Manila Art Foundation.

The main exhibition is open according to the opening hours of the temporary exhibitions.

EXHIBIT SCHEDULE FOR 2023



In 2024, the museum's exhibitions will offer a wide range of art and cultural history.

MAAilman ääriin. Samuli Heimonen and Päivi Siikamäki 24/1.–28/4.

Artist Päivi Siikamäki (b. 1958), born in Saarijärvi, paints space as experienced from within, and artist Samuli Heimonen (b. 1975), also born in Saarijärvi, creates landscape paintings that reflect mythical and future times.

The Fascination of the Garden

– Nanna Susi & Art and Cultural History from the Gardens 18/5–13/10.

Combining art and cultural history, the exhibition brings together Nanna Susi (b. 1967), one of the most important Finnish painters of our time, the cultural history of gardens and the artists Aune Herala, Elsa Härkönen-Peura, Maisa Kivi and Väinö Rusanen from Saarijärvi.

Färin näläkä – paintings and sculptures by Kaija Kontulainen at Tapperien Juholan Gallery in Jarska 15/6–18/8.

Kaija Kontulainen (b. 1966), a sculptor living and working in Kälviä, uses various materials in her art. Like her mentor, Kain Tapper, she is also skilled with other artistic tools. After a long period of sculpting, Kontulainen had a craving to paint, which led to "färin näläkä".

Herajärven haltijoita and Irene Mendelin 6/11/2024–26/1/2025

The history of the farms and inhabitants of the area around Herajärvi, which overlooks the shores of the museum, comes close to home at the Herajärvi owners exhibition. Irene Mendelin (1864–1944), Finland's first female poet to publish her own poetry collections in Finnish, lived in Saarijärvi between 1929–1944. The exhibition presents her poetry, its inspirations and themes, as well as Mendelin's life, her many professions and her diverse organisational work.

The museum exhibits and events are supported by the Friends of the Saarijärvi museum association.

OPEN

24.1.–16.6. Wed-Sun 12 noon to 5 p.m.
19.6.–25.8. Wed-Sun 12 noon to 6 p.m.
28.8.–30.12. Wed-Sun 12 noon to 5 p.m.

PRICES

adults 9 €
children (4-12 v.) 4,50 €
group of adults 4,50 €
(minimum 10 person)

044 459 8413

044 459 8268

Herajärventie 2,
43100 Saarijärvi



MUSEUM YARD



Main
attractions
free of
charge!

THE TRADITIONAL PLANT GARDEN

lets you see the best of perennials! The garden, established in 1995 by the Saarijärvi Friends of Nature, is home to such traditional plants as redleaf rose, mountain cornflower, horseradish, and many others. The purpose of the garden is to act as a local plant genome bank.

THE SCULPTURE PARK

presenting sculptures by artists living and born in Saarijärvi. Including works by e.g. Kain Tapper, Frans Toikkanen, Hannes Autere, Arvo Siikamäki, and Harald Karstén. Exhibits on the yard of the museum can be viewed independently.

THE SHORE MEADOW

looks after the adorable little Veräjääho farm lambs living in the area in the summer.

THE MUSEUM CAFÉ

is extended out to the terrace in the summer. The café shop offers local knowledge, art publications, and timeless gifts.

OTHER MUSEUM DESTINATIONS

CULTURE AND
DESTINATIONS

NATURE
DESTINATIONS

THINGS TO DO

ACCOMMODATION

DINING

SHOPPING AND
SERVICES

MAPS AND INFO

9



TAPPER FAMILY HOUSE JUHOLA AND GALLERY JARSKA

The childhood and youth home of the Tapper artist brothers. Galleria Jarska carries and art exhibit in the summer, and there is a guided cross-country trail around Juhola, associated with important locations relating to the works by the brothers.

OPEN

15.6.–18.8. Sat–Sun 12 noon to 4 p.m.
The destination is open to groups
by order in the spring and autumn
seasons.

PRICES

adults (15–) 8,00 €
children (4–14) 4,00 €
pensioners 4,00€

www.saarijarvi.fi/museo

044 459 8413
044 459 8268
Ryöppäläntie 59
43130 Saarijärvi



TOIVI JÄRVINEN ARTIST RESIDENCE

The art home by the Saarijärvi museum includes not only a fully decorated interior, but also a collection of Finnish art collected by Toivi and Osmo Järvinen.

Tours and guides for groups available
on order via the Saarijärvi Museum.
044 459 8413 / 044 459 8268

Heräjärventie 2, 43100 Saarijärvi



HERALA ARTIST RESIDENCE

Herala exhibits paintings by the Saarijärvi-based artist Aune Herala, as well as several works by famous Saarijärvi folks and other Finnish artists.

Tours and guides for groups available
on order via the Saarijärvi Museum.
040 847 9421 / 040 096 7731

Heralantie 3, 43100 Saarijärvi



STONE-AGE VILLAGE

Come and experience the naturally beautiful Summassaari with its numerous stone-age settlements!

The oldest settlement in the area is 9,000 years old, and the most recent pre-his-toric discovery is an iron spearhead from one thousand years ago. The settle-ments in the area have been reconstructed according to the discoveries made during the several archaeological digs.

Here, the Stone Age has been converted into a life-size village where you can ex-perience the Stone Age lifestyle and learn about Stone Age housing, items, and tools. The region is home to the Summanen village, the path of traps and antiq-uities, and Yläkylä, where stone-age dwellings are exhibited. All destinations are based on archaeological discoveries. The most recent stand-alone destination presents an impact crater found in the nearby Lake Summasjärvi.





STONE-AGE VILLAGE FOR CHILDREN

The buildings and tools in the village are built on a scale suitable for children. In their very own village, children can get to know stone-age life on their own by playing games – from hunting to stone-age living!

The dig site for children showcases prehistorical research methods and allows them to try their hand at being archaeologists. Children can grind stones, decorate comb ceramic containers, fish with katiska fish traps, and hunt by using traps. If the hunt goes well, they can start fires using a fire drill and cook a meal using comb ceramic wares and tools.

PREHISTORY IN GROUPS

Are you looking for a different kind of experiential programme for An occupational well-being day, a party or an outing for your association? You can choose from a basic package with guided tours, a guided tour and workshop, an ancient treasure hunt or customised activity trails for your group from more than ten different options, from wild herbs to fire-making. For more information on activities for all ages, please visit

www.saarijarvi.fi/kivikauden-kyla

OPEN

19.6.–3.8.2024
Thu–Sat 11 a.m. to 5 p.m.

PRICES

family ticket 33,00 €
(max. 5 people)
adults 10,00 €
children (4–12) 7,00 €

050 350 1422

Kivirkveentie 10 a
43130 Tarvaala





Saarijärven kulttuuriraitti



The **culture trail**, put together by the **Friends of the Saarijärvi museum, the Saarijärvi museum, and the city of Saarijärvi**, delves into the history of Saarijärvi village and the local cultural heritage through a number of destinations along the Paavontie road. Just over two kilometres long, the trail ends at Saarijärvi museum, where the cultural heritage of Saarijärvi has been recorded, researched, and exhibited for almost 40 years.

The culture trail starts at the beginning of Paavontie road, at the Tarvaala vicarage near Palvasalmi strait, in the house originally built for the chaplain in 1689. The trail follows the current Paavontie road all the way to Saarijärvi museum. You can also follow the trail from the museum to the Tarvaala vicarage, as information boards along the route provide details of the destinations and a brochure is available for navigation.

More information:

visitsaarijarvi.fi/kulttuuriraitti



Paper versions of the brochure are available in the following locations in the centre of Saarijärvi:

- Saarijärven Ruustinna
- Vanhaintavarainliike Kaiho
- Taitokeskus Saarijärvi
- S-Market Saarijärvi
- Saarijärven kierrätyskeskus
- Saarijärven museo



Open the
PDF-brochure

CULTURE TOUR

Saarijärvi city centre buildings, cultural landscapes, sculptures, and monuments

SCULPTURES AND MEMORIAL

- 1 Museum sculpture park Heräjärventie 2
- 2 Irene Mendelin's memorial plaque Paavontie 50
- 3 Memorial for those gone to the Winter and Continuation wars Koulukeskus, Sivulantie 6
- 4 Karahka and Poem, Lukiontie
- 5 Saarijärvi shore Uimahalli (inside), Sivulantie 6
- 6 Ankara laulu / Sanan säilät & Alkava Sivulantie 11
- 7 Huuto vedestä Lukion puisto
- 8 Surumarssi Läntinen hautausmaa, Paavontie 18
- 9 Alkuvoima Paavonaukio, Kauppakatu 5
- 10 The church area Paavontie 8
 - Paavo' statue
 - Veteran's pillar
 - 1918 memorial
 - Memorial for the Karelian dead
 - Memorial for previous Saarijärvi churches
 - Memorial for those who died in the Civil War
 - Hammarén's grave statue
 - Grave of Hannes Autere
 - Native spirit hero statue
 - Salmilainens' memorial

- 11 Matthias Calonius memorial monument Paavontie 1
- 12 Arc de Triomphe Myllymäentie

BUILDINGS AND CULTURAL LANDSCAPE

- 13 Säästölä Ilolantie 6
- 14 Saarijärven tsasouna Matosalmentie 1
- 20 Community hall Oppitie 1 Gallery Ahku Oppitie 2
- 8 Western cemetery Paavontie 18
- 15 Härkämänty Paavontie 21
- 16 Old common school Karhumäentie 11
- 17 Päiväkumpu former day-care centre Einarintie 3
- 18 Youth centre Paavontie 13
- 19 Saarijärvi church Paavontie 8
- 10 Soldier's graveyard, The old cemetery Paavontie 8
- 11 Tarvaala clergy house Paavontie 1





Open every day
as of 3rd of June
to 11th of August,
even on
Midsummer.

VEIJARI ACTIVITY PARK

Spend a relaxing summer day with the family in a park close to nature!

Veijari is a combination of activities, animals, and beautiful nature. The park offers adventures on land and in water.

It features for example an Adventure trail, football billiards, large bouncy castles, and pedal cars. You can go on water in a canoe, boat, or raft, and nothing is better on a hot day than swimming.

There are ponies, alpacas, pigs, chickens, and many other animals in the animal yard. The reptile house is home to more exotic friends, such as snakes and lizards. The furry nest is home to rabbits and rodents. The fish oasis lets you see what kinds of fish are swimming under the water in Finnish lakes. Pony walks and quad bike rides are available twice a day.

You can bring your own food or enjoy the offering of the Food court. The Kappellilampi summer café serves ice cream and refreshments from 11:00 to 18:00.

The Veijari activity park has much to see and do for one day. If you buy a day pass, you are welcome to visit the park the following day as well for the same price!



PUUHAPUISTO
Veijari

0400 621 663
Puistotie 1
43250 Kolkanlahti

SEE PRICES AND ADDITIONAL
DETAILS ONLINE
www.puuhapuistoveijari.fi



Saarijärvi 62°41'54.0"N 25°17'41.6"E

LUMPERONHARJU

Plots for sale



Block	Plot	Beach plot	Surface area	Price
610	1	No	1 219 m ²	9 000 €
610	2	No	1 262 m ²	9 000 €
610	3	No	1 247 m ²	9 300 €
610	4	Yes	1 542 m ²	24 000 €
610	5	Yes	1 428 m ²	26 500 €
610	6	Yes	1 451 m ²	26 500 €
610	7	Yes	1 622 m ²	25 000 €
610	8	Yes	1 794 m ²	SOLD

MORE INFORMATION ON AVAILABLE PLOTS

Tarmo Heinänen
Land Use Manager
044 459 8314

tarmo.heinanen@saarijarvi.fi

Niina Kemppainen
Planning Secretary
044 459 8406

niina.kemppainen@saarijarvi.fi



See events in Saarijärvi here (in Finnish):
www.saarijarvi.fi/taapahtumakalenteri/





Saarijärvi
Church operates as
a roadside church
26/6–2/8/2024,
Mon–Fri at 11 am–
5 pm, with a church
guide present.

SAARIJÄRVI CHURCH

A church in the middle of town!

The Saarijärvi parish was established in 1628. The current church was built in 1846 to 1849, and it is the third church to be built on the same spot. The previous churches were built in 1628 and 1649.

The church is a masterpiece of 19th century design and construction with an 18-meter-wide cupola dominating the main hall. Such a sizeable cupola would normally require a stone frame, so to find one in a wooden church is counted among the notable achievements of Finnish architecture in the 19th century. You can also visit the church by making an appointment with church official Pia Rantala. Prayer hours can be arranged in conjunction with your visit; please inquire within the church registry office.

While your there, do also visit the Pylkönmäki church designed by Jaakko Kuorikoski in 1864 and renovated by Alvar Aalto in 1926. Keskustie 40, 43440 Pylkönmäki



church official Pia Rantala 040 8246 825
church registry office 040 1534 736 (closed on Wednesdays)

Paavontie 8
43100 Saarijärvi



A church guide is on location in the summer,
see more details at www.saarijarvenseurakunta.fi



ATELIER LEIJONATORNI

Atelier Leijonatorni provides artistic pleasures and a romantic atmosphere by the Lumperoinen lake under the guidance of a tour guide.

The atelier exhibits works by Jouko Hackzell over the years. Most of the paintings are on sale, and you can also commission your own work.

OPEN

Mon-Fri 10 a.m. to 5 p.m.
Sat-Sun noon to 3 p.m.

0400 820 423
Rahkolantie 49 B
43100 Saarijärvi

<https://hackzell.vuodatus.net>



ART GALLERY AHKU

The art gallery established by Saarijärven museon ystävät ry Association in the summer of 2021 is located in a historical building, in the centre of Saarijärvi, which the Paavonseutu Co-op previously used. The name of the gallery, Ahku, comes from Central Finland's northern dialect word, which means passion, will and desire.

In addition to temporary exhibitions, the gallery also sells art and auxiliary products.



The former building of the Paavonseutu Co-op
Oppitie 2 / Paavontie 30, 43100 Saarijärvi
samunystavat.fi/ahku





PYHÄ-HÄKKI NATIONAL PARK

Enter the wild to find peace, go hiking in an unique environment!

Pyhä-Häkki lets you experience the wind in pine trees that are hundreds of years old, the song of the flowing water in brooks, and the scent of the bog. The Riihineva trail (1.4 km) and the Mastomäki trail (3.5 km) are particularly suited for families with children. The most popular route, the Kotajärvi trail (6.5 km), runs around the entire park from wild woods to duckboards. The Tulijärvi trail (17 km) is best for those looking for a longer hike. All routes have been marked on site with dedicated colour symbols.

There is a cooking shelter by Kotajärvi with a masonry fireplace and a separate fire pit. You can get drinking water from the well at the information centre.

The national park allows temporary camping, which is recommended at the Tulijärvi shelter situated very close to the park. The Poika-aho cabin houses sheep herder vacationers in the summer, and in the spring and autumn the cabin is available for single night rentals.

Guided hikes and other services are available from the national park partners, see more details at www.luontoon.fi/pyha-hakki/palvelut/yhteistyotahot



See a video about
the destination!

Take a look at the
map p. 66

Metsähallitus customer
service: 020 6395 270,
Mon-Fri 9 a.m. to 3 p.m.

www.luontoon.fi/pyha-hakki

Viitasaarentie 2119
43170 Häkiliä





KULHANVUORI AND SYVÄOJANROTKO

A peaceful day-trip destination for those looking for eskers and gulches.

Experience one of the tallest points in Central Finland, the Kulhanvuori hill rising 260 meters above sea level, in the Kulha nature conservation area. Trail length is about 3.5 kilometres.



Go hiking in the mysterious Syväojanrotko gulch, which is a canyon about one kilometre long. Its vertical cliff faces rise up to the treetops. The ice on the cliffs melts as late as in the summer, as the sun only shines on the northeastern wall of the canyon.

There is a fire pit in the area with firewood readily available.



**See a video about
the destination!**

Take a look at the
map p. 67

Metsähallitus customer
service: 020 6395 270,
Mon-Fri 9 a.m. to 3 p.m.

www.luontoon.fi/kulhanvuori

Konttimäentie 1100
43220 Mahlu



JULMAT LAMMIT

See the canyon ponds, steep cliffs, and dark woods where young Runeberg went wandering and writing his poetry! There is a trail less than 3 kilometres long that goes around the pond area with a fire pit and a scenic outlook. There are three ponds by the trail which is part of the 12-kilometre **Runeberg nature trail**. The trail is marked with blue posts.

Julmat Lammit is a nature conservation area where you get to see the effects of the ice age on the rocks and soil and the formation of the terrain.



See a video
about the
destination!

Kokkolantie 886
43250 Kolkkanlahti

Take a look at
the map p. 68



THE SEVEN LAKES CANOE ROUTE

Enjoy no fewer than seven lakes on one trip going around the canoe route surrounding the centre of Saarijärvi city. There are several rest areas and overnight cabins along the route.

The tour includes the lakes **Saarijärvi, Kallinjärvi, Summasjärvi, Kiimasjärvi, Pyhäjärvi, Iso- ja Pieni-Lumperoinen**.

Take a
laid-back
canoe trip!

Equipment rentals by
Saarijärven Latu, see page 35

Get more details and a map via the QR code!





HAIKANKÄRKI

A trip to Haikankärki in Summassaari shows you how stunning the Saarijärvi landscape can get! You will travel along the top of a tall esker among pine trees and lakes on both sides. The lake comes nearer and nearer as you approach the end of the trail. Stop at the fire pit to enjoy your lunch and the view! Trail length is about 15 kilometres

Kivikirveentie 10
43130 Tarvaala

Take a look at
the map p. 69



ANCIENT NATURE PATHS

The **ancient path** is a trail approximately 2 kilometres long, along which different destinations are presented and pre-historic themes expounded on by using information boards. The guided boards by **the nature trail** showcase animals and plants in the area, tell you about conservation, and give tips on how to make environmentally friendly choices.

Kivikirveentie 10 A
43130 Tarvaala

Take a look at
the map p. 69



SAARIJÄRVI RAPID ROUTE

Wild rapids, calm rivers, beautiful lakes, and a Saarijärvi cultural landscape. All of this is provided by the easily traversed 82 kilometres long landscape route **Kyyjärvi-Karstula-Pylkönmäki-Saarijärvi**.

You will go down 22 rapids totalling some 7 kilometres on this longest interconnect-ed rapid route in all of Southern Finland.

Get more details
and a map via the
QR code!



CENTRAL FINLAND TRAIL

The trail lets you go cross-country skiing and hiking from Saarijärvi to Kannonkoski through the Pyhä-Häkki national park. The trail includes up to 40 kilometres of ski and hiking trails in the winter.

The trail begins in the centre of Saarijärvi city at the address Lähdekuja 2.

Inquire at recreational
services 044 459 8298





ANY LUCK IN FISHING?

Catch the best tips for fishing and all you need to know about permits!

Saarijärvi allows fishing on several bountiful lakes such as the clear Pyhäjärvi, on several rapids, and on the Pajulampi pond by the city centre.

You do not need to be a professional to try your luck, just hook a worm and give it a go. Dawn and dusk are the best times for fishing, as this is the time when the small fish come out of hiding to hunt for insects. When the small fish get going, the bigger and more valuable fish do too, so this is the time when you can catch the best fish. What could be more exciting than tiring a silver-sided trout in the dusk of a summer night!

FISHING LICENCES

Akun Radio
LAKE, CRAYFISH, RAPID, AND SEASONAL
LICENSES VARIOUS FISHING EQUIPMENT
Nahkurintie 4, 43100 Saarijärvi
0400 497 119

SEO Ranta-Kivi
ALL LICENCES
Jyväskylän tie 34, 43100 Saarijärvi
014 333 3777

www.kalakortti.com
RAPID LICENCES, FISHING AREA LICENCES



FISHING SPOTS IN SAARIJÄRVI

KONTIJOKI - KOTAJOKI, RAPID FISHING

The fishing area is expansive, as the rapids are over ten kilometres long combined. The destination is at its best in early summer and autumn, because there might not be much water in the rapids in the middle of summer. Silmäkoskentie 19, 43100 Saarijärvi

MAJAKOSKI, RAPID FISHING

Stocked species in the rapid are zander and trout. Natural species include perch, grayling, and pike. Casting and fly fishing are allowed. There is a shelter and a fire pit in the area.

Kallinjärventie 2, 43130 Tarvaala

TIPS

Worm fishing is especially amusing for the children in the family. It is very exciting when the float sinks beneath the water and the rod bends in the hands of the small angler. Did I get a perch or maybe even a rainbow trout? Rent a boat and try your luck at e.g. the Pajulampi pond by the city centre.

Hear the roar of water and experience something unforgettable with rapid fishing! You may even see a white-throated dipper observing you as you fish. You can purchase a casting and trolling licence that covers the areas of several fishing associations.

Get your licence, make some lunch and go fishing!



The contact details for all associations can be found at the address

www.saarijarvenosakaskunta.net

www.saarijarvenreitinkalatalousalue.fi

MUITTARINKOSKI - RIEKONKOSKI, RAPID FISHING

The rapids are about 5 kilometres from each other, the Muittarinkoski rapid runs into the Mahlunjärvi lake and the Riekonkoski rapid runs into the Saarijärvi lake. There is a shelter and a fire pit at Riekonkoski. **Riekonkoski**, Riekontie 138, 43250 Kolkaniemi. **Muittarinkoski**, Muittarintie 570, 43240 Lehtola

PAJULAMPI, RECREATIONAL FISHING DESTINATION

This licence-based recreational fishing destination is maintained by the Saarijärvi Association. The pond is stocked with rainbow trout and whitefish. If you want to fish from a boat, you can rent one at Ranta-Kivi at the address Jyväskyläntie 34. Hyppyrämäentie 5, 43100 Saarijärvi, 014 333 3777.



PAAVONRINTEET

Downhill skiing and snowboarding less than four kilometres from the city centre!

Paavonrinteet offers five illuminated slopes for downhill skiers, varying in length from 70 meters to 750 meters. There is a street and rails for snowboarders on the third slope.

There are two lifts in the area, the children's lift being free of charge. Children below six can go skiing for free on the big slope, if accompanied by an adult and wearing a helmet!

There is a ski rental service that will provide you with all the equipment you need for skiing and snowboarding.



Café Keko offers coffee services and ticket sales. There is also a sledding hill in the area!



LIFT PASSES

adults / children 6 to 12	
1 h	15 € / 10 €
2 h	18 € / 14 €
3 h	23 € / 18 €
day rent	28 € / 22 €

EQUIPMENT RENTALS

1 h	10 €
2 h	13 €
3 h	18 €
day rent	25 €

OPEN

Tue-Fri 3 p.m. to 7 p.m.
Sat-Sun 11 a.m. to 6 p.m.
Mon closed

DURING HIGH SEASON

Opening hours
announced on
Facebook.

www.saarijarvi.fi/paavonrinteet

044 459 8982 /
ski rental





Right next
to the Paa-
vonrinteet
slopes!

KUSIAISMÄKI SKI CENTRE

Competitions, fitness skiing, and beginner trails!

Ski trails running in varied terrain provide good conditions for competitive and fitness skiing. There are beginner and recreational trails too.

Easy illuminated 1, 2, and 3 km trails for fitness skiers and a 1.5 km trail around the Pajulampi pond. 3, 5, and 8 km trails for experienced competitive skiers.

The Kusiaismäki ski centre also includes K-10, K-26, and K-44 ski jumping ramps, the latter two being available in the summer too.

Other services include a waxing shelter, a testing slope, a break hut by the start/finish line, and a service building with a toilet.



There is a disc golf course available in the summer.

The ski trails are also suitable for jogging.

Don't overlook the bountiful berry and mushroom grounds in the area!



www.saarijarvi.fi/kulttuuri-ja-vapaa-aika/liikunta/Ulkoliikunta/hiihto/

044 459 8295/
City of Saarijärvi
Recreation and Leisure

Hyppymäentie 1
43100 Saarijärvi



SWIMMING HALL - FITNESS CENTRE AARRESAARI

Come spend a refreshing day with the whole family. Aarresaari lets you relax, work on your fitness, or get a nice massage!

A 25-meter fitness pool with four tracks and low jumping podiums is good for fitness swimming and aquajogging. Aquajogging belts are available at the swimming hall.

You can relax in the therapy pool with water massage spots and a whirlpool rest area. There is additionally a whirlpool bath and a cold water pool in the hall. A sauna and a steam sauna are available for relaxing and warming up after swimming.

There is 36-meter waterslide and a children's pool for kids and those of a youthful disposition, where the deepest point is one meter deep.

Guided water-based exercise on almost every day of the week! See all groups and additional details at the address

www.saarijarvi.fi/sisalto/ohjatut-ryhmat



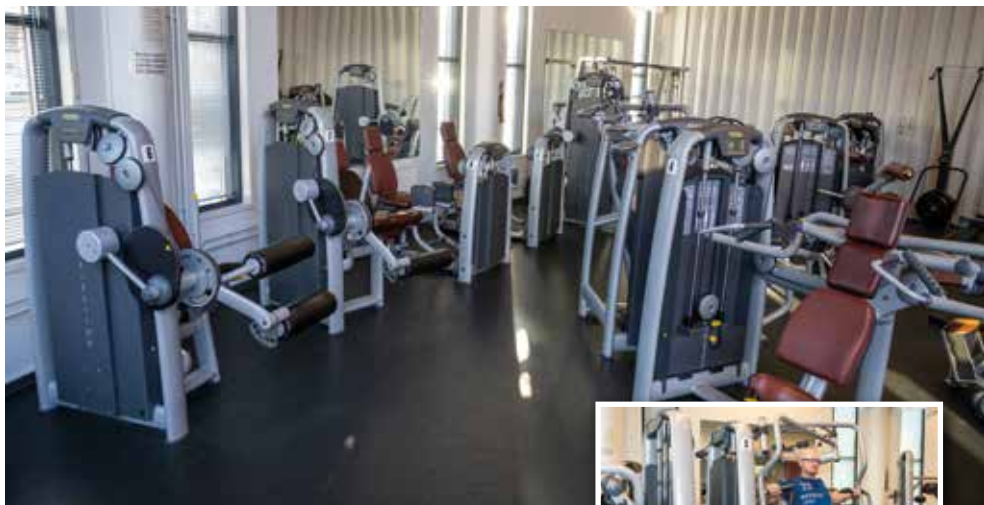
Customer service hours and price list will change in autumn 2024

Current opening hours and prices:

saarijarvi.fi/kulttuuri-ja-vapaa-aika/liikunta/aarresaari/

044 459 8275 / Control room | 044 459 8278 / Tickets
Sivulantie 6, 43100 Saarijärvi





GYMS

Whether you want to run on a treadmill, punch a bag, or work on your abs, gyms provide you with everything you need for a complete workout!

In addition to the broad selection of TechnoGym equipment upstairs, there is a free-weight room downstairs for the heavy lifters! Set what ever weights you want on all equipment. When the Aarresaari centre is closed in the summer, you can buy gym cards at the café Frisee at the address Kauppakatu 1, 43100 Saarijärvi.



All about Aarresaari from this QR code!

Customer service hours and price list will change in autumn 2024

Current opening hours and prices:

saarijarvi.fi/kulttuuri-ja-vapaa-aika/liikunta/aarresaari/

044 459 8275 / Control room | 044 459 8278 / Tickets
Sivulantie 6, 43100 Saarijärvi





ICE ARENA

Skate and play in the ice rink!

Saarijärvi Ice Arena is located in the centre of Saarijärvi at Valotie 5, 43100 Saarijärvi.

Free public opening hours at Saarijärvi Ice Hall are Tuesdays from 15–17, Wednesdays and Thursdays from 15–16.45. First hour without sticks. On the ice only with helmet on and skates on (no shoes).

You can book ice shifts by requesting a booking directly from the booking calendar (QR code at the bottom of the page) or from the outdoor facilities staff (contact details below).

Price list for using the ice:

Saarijärvi residents €95/hour

Visitors from outside Saarijärvi €105/hour

Cancellations must always be notified three days in advance, uncancelled shifts will be charged.



www.saarijarvi.fi/kulttuuri-ja-vapaa-aika/liikunta/luistelu/

Juha Notkola
employee of outdoor areas
040 773 1079
juha.notkola@saarijarvi.fi





LIIKELATAAMO

Entertainment centre for everyone

Liikelataamo provides enjoyment in the form of bowling, glow bowling, exercising, hanging around, playing golf or other games in a relaxed environment with good music!

The atmosphere there is unique, and the service at the restaurant (full alcohol license) no worse than excellent. You are welcome to have a good time, Liikelataamo is open for everyone! You can also have unforgettable celebrations here, including birthdays or refresher events!

Spend a nice night with sauna bathing, darts, golf, and bowling. Our well-equipped gym lets you enjoy movement or train with a purpose – whatever your own level may be. Don't forget our individual and small group coaching!



Be sure to check our events calendar on our website to find yourself at events such as Stand Up at Liikelataamo or other events for everyone.

OPEN

Bowling Mon to Sat.
Gym Mon to Sun 24/7.
See our opening hours on our website.

PRICES

bowling from 20 € / h / lane
glow bowling 24 € / h / lane
shoe rentals 1,5 € / pair

www.liikelataamo.fi

050 339 8747

Rentontie 7
43100 Saarijärvi



CULTURE AND
DESTINATIONS

NATURE
DESTINATIONS

THINGS TO DO

ACCOMMODATION

DINING

SHOPPING AND
SERVICES

MAPS AND INFO

Get in touch and let's plan the right horseback riding experience for you!



RIDING AND WELL-BEING AT THE PUROLA FARM

TWO-HOUR CROSS-COUNTRY RIDE €68

A two-hour tölt or gallop trail where the speed is adjusted according to the experience level of the riders. Riding takes place on forest trails and roads. For 2 to 5 persons.

The two-hour trail for beginners includes an hour of getting to know your horse, learning horsemanship and the basics of riding, and then a one-hour riding trip across varying terrain. For 2 to 4 persons.

There are also half-day and full-day excursions, and 2-day treks. Gait and position les-

sons on the field, camps for adults and young people.

Purola Farm is an approved member stable of the Finnish Equestrian Federation and the Finnish Icelandic Horse Association.

WELL-BEING

To support your well-being, we offer equine-assisted activities, various sauna experiences such as peat and traditional saunas, a variety of yoga sessions, forest excursions, day and weekend retreats, singing bowl therapy, and treatments.



DETAILS AND RESERVATIONS

040 512 1432 /
Pipsa Wagner

www.purolafarm.fi

Kekkosentie 491
43100 Saarijärvi





DISC GOLFING!

Saarijärvi is home to several free disc golf courses. The required equipment can be rented on a library card at the Saarijärvi library; read more on page 35.

KUSIAISMÄKI

A national championship level course about 5 km long. In addition to the 20 holes on the course, there are two practice spots available. The course is very hilly with varying elevations.

Hyppyrimäentie 1-2, 43100 Saarijärvi

PYLKÖNMÄKI

9 holes along a 1.6 kilometre course. The terrain is rolling with some elevation differences. Suitable for both beginners and experienced players. Equipment available for rent at Keskustie 28, 43440 Pylkönmäki

Rahikaisentie, 43440 Pylkönmäki

SUMMASSAARI

A 9-hole course in hilly terrain.

Summassaarentie 180, 43100 Saarijärvi

KALMARI

The 10-hole Nahjus course at Kalmari has been built close to a village house alongside a cross-country jogging trail.

Nahjuksenraitti 12, 43270 Kalmari

AHVENLAMPI

A 19-hole course in an easily traversed heath forest.

Ahvenlammentie 62, 43250 Kolkanlahti



An enjoyable
activity for
the whole
family!



KUKONHIEKKA ENTERTAINMENT CENTRE

Kukonhiekkä is one of Finland's most popular summer dance venues, located on the shore of Pieni Lumperoinen lake by the Saarijärvi city centre.

Dances are arranged there on Saturdays from Mayday eve until mid-October with top Finnish artists. Full alcohol licence, three bars, café, grill, karaoke, two terraces with a view. Electrical sockets for 6 vehicles and a toilet/shower for overnight guests.

Check opening hours and performers on our website.
Party catering services also available!

Summer
dances every
Saturday!
Age limit
18 years.



www.kukonhiekkä.com
040 540 2086

Kukonhiekkäntie 35
43100 Saarijärvi



Just name it
=>
Lets make it
happen

PUUNALLE

PuuNalle is a wilderness and nature experience company founded in 2022. The guide is a trained nature and wilderness guide, as well as a canoeing instructor.

- Wedding and engagement trips in survival style
- Well-being days in the wilderness
- Food courses on an open fire
- Paintball shooting
- Kayaking and paddling trips
- Bachelor / hen party
- Caravan sauna
- Guidance in the wilderness

www.puunalle.com

Timo Risikko
050 466 7567



Fishing guide
services in
beautiful
landscapes.

FISHING GUIDE SERVICES TEEMU NIEMINEN

Come and experience the excellent fishing waters of Saarijärvi's route and enjoy the beautiful landscapes of Central Finland. The services include fishing guide services and wilderness dining for both private individuals and companies and foreign tourists. For groups of 1-4 people fly fishing and trolling in the summer.

In the winter, ice fishing and bait fishing excursions are organised.

www.temppafishing.fi
Fishing guide services
Teemu Nieminen,
040 353 6601



@t3mppa_fishing



FEEL YOUR NATURE

The beautiful and pristine nature of Saarijärvi offers your group the opportunity for an unforgettable experience. Would you like to organize a canoe trip with us using the lakes, rivers or rapids of the region? Or shall we go together to experience the ancient forests and swamps of Pyhä-Häkki National Park?

We work closely with different service providers in the region. We can customize activities for you for the whole day. End a perfect day with delicious local food and a Finnish sauna if you wish.

info@feelyournature.fi

+358 (0)40 161 7568



SASUALS INSPIROIVA

Experiences with Siberian Huskies. Movingly Arctic power and relaxing company.

With Siberian huskies, you can try dog sledding or move more leisurely in the tranquility of nature. Experiences and adventures can also be arranged for children.

www.sasual.kotisivukone.com

sasualsinspiroiva@gmail.com



FINNISH YOGA INSTITUTE

Owned by the Finnish Yoga Federation, the Yoga Institute has been providing yoga courses since 1973. Enjoy yoga in a homely environment in the middle of nature. Calm and peaceful surroundings provide the best conditions for getting into yoga. The Institute offers member courses throughout the year, and even for beginners. The courses focus on different yoga themes. The courses last for a weekend or up to a whole week. The teachers are experienced and meritorious yoga teachers from all over Finland. The training of yoga teachers is also centred on the Yoga Institute. The courses offer delicious and diverse vegetarian dishes, including fully vegan ones, using as much locally sourced and grown foods as possible.

All courses are available at:
www.joogaliitto.fi/joogakurssit/

Register for the courses in advance!

www.joogaliitto.fi
040 577 8682
Taipaleentie 122,
43100 Saarijärvi



PLENTY TO DO

EXERCISE

CENTRAL SPORTS FIELD

The primary sports activities at the Saarijärvi Central Sports Field are athletics and soccer. The running track is also an excellent surface for fitness enthusiasts who enjoy walking and running. The sports field is freely available for use by individual residents when there are no reserved sessions ongoing.

KUSIAISMÄKI ARTIFICIAL TURF FIELD.

The artificial turf field at Kusiaismäki offers excellent opportunities for playing football. The field was inaugurated in the summer of 2019. It is available for free use by all football enthusiasts, except during reserved sessions. Hyppyrimäentie 1, 43100 Saarijärvi

AUTIOLAHDEN BEACH VOLLEY

A quality beach volley court right next to the Autiolahti beach. Mäntytie 4, 43100 Saarijärvi

SUMMASSAARI TRAINING STAIRS

The training stairs, completed in the summer of 2018, feature 155 steps. They are located near Haikankärki. Summassaarentie 180, 43130 Tarvaala

MANNILA TRAINING STAIRS AND OUT-DOOR GYM

The training stairs completed in the fall of 2023, along with the equipment to be installed during the summer of 2024, are located near Mannila's pine forest. Matosalmentie, 43100 Saarijärvi

PLAYGROUND

RUNEBERGINPUISTO PARK

The park includes a playground for children and exercise equipment for the elderly. Mittarinpolku 1, 43100 Saarijärvi

FOR DAREDEVILS

ICE SWIMMING

The winter swimming spot and sauna at Sofianranta beach is open from October to March, Tuesdays and Fridays at 16:00 to 21:00. Winter swimming without the sauna is available on other days as well. Season fee or one-time fee. More information at the sauna or from Erja Hiironen at 0500 641 877. erja.hiironen@gmail.com. Provided by Saarijärven latu / www.saarijarvenlatu.fi. Paavontie 4, 43100 Saarijärvi

AIR GUN RANGE AT THE SWIMMING HALL

A 10-person air gun range for rifles/pistols and two game targets. Supervised evenings in the winter on Mondays and Thursdays at 6 p.m. to 8 p.m. Details at Saarijärven Ampujat ry / Mauri Kemppainen 040 1686 486. Sivulantie 6, 43100 Saarijärvi

BEACHES

AUTIOLAHTI

A small pier and dressing booths on the beach. Swings, a small slide, and a sandbox for children. Mäntytie 4, 43100 Saarijärvi

MANSIKKANIEMI

Dressing booths and pier with a jump tower, platform heights 1, 3, and 5 meters. Swings and a small slide for children. Mansikkaniementie 26, 43100 Saarijärvi

Kusiaismäen tekonurmikenttä



Reserved and available time slots for the Central Sports Field and Kusiaismäki artificial turf can be viewed here: <https://saarijarvi.asio.fi/onlinekalenteri/saarijarvi/guest.php?>



RENTAL EQUIPMENT

It's nice to try new things when on holiday. How would you like tennis, or maybe snowshoe hiking?

KAYAKS, CANOES, SUB BOARDS, SNOWSHOES, TOURING SKATES AND HIKING SUPPLIES

Saarijärven Latu rents canoes and kayaks with all necessary safety equipment (life vests, paddles, backup paddle for rapids, kayak covers, watertight barrels, rapid helmets, and canoe trailers). The association also rents out some snowshoes, touring skates, and other hiking supplies.

Longboat rowing on Tuesday evenings in the summer, free of charge. 150 € for groups, available on order. Inquire at 040 8356 191 / 040 709 6896.

Get in touch
and make
a reservation!

www.saarijarvenlatu.fi
kayaks, canoes and
sub boards
045 630 8529

Equipment rental
040 161 7568

SAARIJÄRVI CITY LIBRARY

With a library card, you can also borrow sports equipment.

At Saarijärvi City Library, with your library card, you can borrow various sports equipment such as Mõlkky, basketball, beach volleyball, petanque, scooter, SUP board, snowshoes, trekking skates, and tennis rackets. In the summer, there's a free tennis court available inside the ice hall at Valotie 5.

You can also borrow frisbee golf equipment and underwater binoculars with your library card, allowing you to explore the underwater world, including bottom plants, shells, and other aquatic creatures. With quiet movements, you might even spot fish in the shoreline waters!

Check the library opening hours:

www.saarijarvi.fi/kulttuuri-ja-vapaa-aika/kirjasto

044 459 8257

Sivulantie 12
43100 Saarijärvi



RUUSTINNA

Ruustinna is part of a nationally recognised cultural environment. The Saarijärvi culture trail starts on our yard and continues over the beautiful Palvasalmi strait to the city centre. Our individually decorated rooms are located in the main building and the renovated atmospheric Wäentupa house. You can enjoy new summer experiences in our luxury tents and Tentsile tents. The accommodation includes a hefty breakfast and the pleasure of a lakeside view from morning until night.

Lunch is served every weekday, and our charming granary café is open in the summer. Our beachside sauna is heated on order, our extensive terraces invite you to have a nice time, and taking the cable ferry to Papinniemi cape is part of the experience at Ruustinna. You can go on boat or canoe trips to lakes Saarijärvi and Pieni Lumperoinen.

OPEN

detailed information
on our website.

www.ruustinna.com

info@ruustinna.com
041 319 2332

Paavontie 1,
43100 Saarijärvi



AHVENLAMPI CAMPING

A beautiful camping ground by a natural lake. A wide selection of different cottages for all kinds of groups, and caravan and tent spots. Beach saunas, a café, and a child-friendly beach at your disposal.

**The camping ground is located less than
two kilometres from the Veijari activity park!**



www.ahvenlampicamping.net

0400 505 768

Ahvenlammentie 62
43250 Kolkanlahti





Four
season,
a hundred reasons
spend cottage
vacation!

SAMMALLAHTI COTTAGES

The Sammallahti cabins are located in the Kalmari village of the city of Saarijärvi by the lake Iso-Löytänäjärvi. The lake is approximately 4 km long and 1 km wide.

The spacious and well-furnished cabins are close to the Jyväskylä-Kokkola trunk road, in the peace and quiet of the countryside. The terrain is hilly with green forests punctuated by lakes; beautiful all year around.



www.sammallahdenmokit.fi
juho.iso@gmail.com
Juho Iso-Ahola 040 568 7438

Löytänänrannantie 230
43270 Kalmari / Finland



Luotola
Saunaland
offers sauna expe-
riences, pleasure
and peace.

LUOTOLA FARM

Nature and local food on the shores of lake Summanen. An old country house milieu offers a party space for 40 persons.

Saunamaa offers sauna bathing in a smoke sauna and continuously heated saunas, catering services on a covered terrace. The estate sells firewood and towed saunas are available for rent. Grain products, summer potatoes, and pastries available on order.



www.luotolantila.fi
pirjoluoatola@gmail.com
040 596 0358 / Martti
050 323 7937 / Pirjo

Laihantie 89,
41270 Lannevesi





A cabin atmosphere and natural experiences in the peace of the countryside all year round!

JAKOLAN TILA

Villa Mertala A spacious one-story villa, 60 square meters, located by the shore of Lake Karanka. This place is well-suited for family vacations or small groups.

Mertaranta a comfortable sauna cabin with privacy, sharing a beach with Mertala.

Rentola a renovated farm house and yard in beautiful surroundings, swimming in the Heijostenkoski rapid stream pool 300 m away, fly fishing possible by the rapid.

Maailaishotelli Mulikan HillTon Event spaces for 100 people, meals and coffee services available upon request. Accommodation for 20 people with shared kitchen facilities, some rooms with private WC and shower. Sauna facilities in the same building.

Jakolan automuseo with more than 70 rare vehicles on display, restored by the old man of the house, Raimo Oikari. Open by agreement.



www.jakola.fi

040 565 3716

Karajoentie 294 A
43480 Päjäjärvi



PUROLA FARM

A rustic inn by the lake Katajajärvi, in the middle of a beautiful countryside scene. We offer inn accommodations, tasty breakfast and dinner, wonderful experiences with Icelandic horses, as well as yoga, guided forest hikes, honey and peat treatments, and team-building, meeting, and party services all year round.

We also offer horse-back riding, see page 30

www.purolafarm.fi

040 512 1432



FARM HOUSE HEPOHARJU

Hepoharju provides breakfast accommodations all year round, three barns available for sleeping in the summer.

The farm is home to horses, dogs, and cats. Children can experience safe riding on horses being walked by instructors! Access to the ski trail network in the winter, fishing by the nearby Riekonkoski rapid in the summer.

www.hepoharju.fi

050 361 9349

Harjutie 44, 43100 Saarijärvi



Welcome to
find peace and
comfort at Lam-
minkankaan
Lähde

LAMMINKANKAAN LÄHDE

The cottages, each decorated homely but with different styles, are located either by the shores or atop a hill, each with its own beach area and sauna. The Lamminkangas cottage (for 10 people with spacious living areas) and the Piennarpää cottage (for 10 people with smaller indoor spaces) are equipped with dishwashers, washing machines, and free Wi-Fi. The Lamminkangas cottage is available for rent even in winter. On the extensive 10-hectare estate, there are five other comfortable cottages (for 2-8 people) and two cabins (for 2 people), each with a small electric kitchenette. The Lamminkangas spring is an ECEAT Finland destination, with a strong focus on eco-friendliness.

www.lamminkangas.fi

040 703 0519

Lamminkankaantie 193, 43270 Kalmari



KULTARANTA MANSION

On a peninsula of Summassaari island, accommodations for 18 persons in two buildings, additional beds available. Buildings can be rented separately as well. Accommodations, meetings, dinners, company parties, and first aid trainings. Atmospheric hut buildings, a smoke and hut sauna, and a tub.

www.kartanokultaranta.fi

044 284 3628

Kivikirveentie 10 B, 43130 Tarvaala



APARTMENT 28

Beautiful and pleasant holiday apartments by the city centre, with all services within one kilometre.

The apartments have all amenities, electric adjustable beds, and a large TV in the bedroom. Easy access from Mäntytiie to the Herämäki fitness trail and a beach close to the building.

050 357 3575

marsa.kinnunen@kstpalvelut.fi

Mäntytiie 3 A, 43100 Saarijärvi



LOMAKOIVULEHTO

Koivulehto offers well-equipped beach cabins liveable throughout the year. All cabins have their own beaches, boats, and fishing equipment. Two of the cabins are by the Seven lakes canoe route and the Saarijärvi rapids route. Excellent berry and mushroom picking spots in the vicinity. Ski trails run by the cabins in the winter.

www.lomakoivulehto.fi

0400 891 240 / 040 589 8218

Kalmarin Kangastie 557, 43100 Saarijärvi



LAUTTAMÄKI TRADITIONAL FARM

A popular summer wedding venue with plenty of cultural and historical significance. A log-walled, open room with space for up to 150 diners serves as the main event hall. Everyone can see the bride and groom and the programme. B&B accommodations for 45 persons in the summer.

www.lauttamaen-perinnetila.webnode.fi

0400 202 610

Kuoppalantie 1161
43440 Pylkönmäki



KOSKELA FARM

Koskela farm offers peaceful surroundings for travellers by the Pyhä-Häkki national park on a beautiful spot in a Pelttojoki river bend between two rapids.

Stylish barn accommodations for 2 persons in the outhouse, additional beds available. A summer barn for two on the yard, space for 2 or 3 camper vans or trailers with electricity, and tent camping.

www.koskelantila.fi

majoituskoskela@gmail.com

040 841 4092

Silakkatie 58 b, 43170 Häkkilä



SUMMASSAARI BEACH HOUSES

In the beautiful Summasjärvi island, there will be cottage accommodations available. The cottages will be completed during the summer of 2024

srantatalot@gmail.com



See more accommodations by scanning the QR code!



ONNELA, 6 PERSONS, SAARIJÄRVI

Onnela is one of the apartments of an 1800s log-built semi-detached house, which is available to use together with its yard areas. Accommodation for six people. If necessary, 2 mattresses can be provided for additional guests. The kitchen is equipped for essential meal preparation. The apartment has a sauna, and there is a small beach nearby, where you can take a dip in one of the cleanest lakes in the region. Baby and children's equipment are available for families with children.

Varaa osoitteessa: [airbnb.fi](https://www.airbnb.fi)



Relaxing
stay
for two

KUKONHIEKKA VIBES

Beautiful sauna building with jacuzzi

A stylish sauna building in the proximity of the main building. Close to shops and services. There is a bed for two at the destination. The cabin (3x3m) is a compact space with a sofa bed. There is a possibility for grilling on the large terrace. You can access the sauna and jacuzzi whenever you want. Direct connection to the lake. A fire place with a lake view offers a wonderful setting for an atmospheric evening outside.

Also ask: Canoe/SUP boards

Bookings and inquiries:
[airbnb.fi/h/kukonhiekkavibes](https://www.airbnb.fi/h/kukonhiekkavibes)

Tuukka Hietamäki



KONTTIMÄKI SCHOOL

Konttimäki's idyllic village school is suitable for accommodation, camps, and holidays and a venue for various celebrations and events. Affordable camping-level accommodation for up to 50 people in the vicinity of Kulha's nature protection area. Guests have access to a yard sauna and BBQ shelter in the yard area. Maximum number of people for events is 80 people. There are good hunting opportunities in the vicinity too. During the winter, the village's approx. 40-kilometre-long ski track network starts from the schoolyard.

Konttimäen kyläyhdistys ry
040 778 0540
riittapeltonen310@gmail.com



PARIISINRANTA

Built in 2016, this villa offers a spacious living and dining area, two bedrooms with double beds, and a sofa bed in the living room. The bathroom includes a shower and washing machine. A large glazed porch overlooks the lake. There's also a separate beach sauna, completed in 2017, with a wood-fired sauna, shower room, and living area with a pull-out bed, just 5 meters from the water.

www.lomarengas.fi/13451
jlmenard44@gmail.com
040 321 4960
Uodinsalmentie 27, 43440 Pylkönmäki



Private house
by the lake
near the city

HÄMEENNIEMI

Relax in beautiful natural surroundings with family or colleagues. The house is close to shops and services. The lake offers possibilities for numerous experiences throughout the year.

The house has a great location with a separate sauna building, which offers a unique atmosphere. The property is fully equipped for families with children and for business travelers.

The detached house has two floors. There are beds for eight people + a cot. Upstairs, two bedrooms with single beds and one cot. Access to the last bedroom is through the first bedroom. A double bed in the alcove next to the kitchen, and a double bed on the sofa bed in the living room. Fully equipped kitchen. Remote working space in the upstairs loft. WC downstairs. Own sauna building and garage. Also ask: Canoes/SUP boards

Bookings and inquiries:
airbnb.fi/h/hameenniemi

Tuukka Hietamäki





Holiday
home in
Kolkanlahti
4+3 persons
120m²

LEPONIEMI

Leponiemi offers a cozy retreat ideal for workgroups or vacations. This traditional house spans three floors with sleeping arrangements for 4+3 guests. The top floor features two bedrooms and a toilet. The middle floor hosts a kitchen equipped with standard appliances, a toilet, a living room with a sofa bed, and a sitting room with a wooden sofa. The ground floor includes a fireplace room with a bed, a shower, an electric sauna, an office with an electric desk, and a laundry room. Well-behaved pets are welcome for an additional fee, and the house undergoes thorough cleaning after each stay.

Access to the Saarijärvi beach is via steep stairs. The beach is shallow with a sandy bottom near the shore and becomes deeper with reeds and muddy ground further out. There's a pier and a rowing boat available. In summer, a stand-up paddleboard is provided, and a hot tub can be rented separately.



Eija Kuusinen
info@elwish.fi
0400 525 550

Parkatinniementie,
43250 Kolkanlahti
Saarijärvi

www.lomarengas.fi/mokit/saarijarvi-leponiemi-15672

Runeberg's Park
TORSTAIKEIKAT
Summer 2024
20/6, 27/6, 11/7,
18/7, 25/7, 1/8,
and 8/8.



FRISEE

Enjoy a healthy soup, salad, or buffet lunch in the centre of Saarijärvi city. Vegan lunch option always available. Enjoy special coffee blends, smoothies, waffles, and delicacies from our in-house bakery. You can also buy our products to go or as catering for your party. Enjoy a cold drink or ice cream on our large terrace full of sunshine. We have an alcohol licence. We also sell our own peanut granola and a wide selection of organic tea.

OPEN

Mon 9 a.m. to 3 p.m.
Tue–Fri 9 a.m. to 5 p.m.
Sat 10 a.m. to 2 p.m.
Sun closed

www.frisee.fi

050 381 7664



Kauppakatu 1, 43100 Saarijärvi



SAARIJÄRVEN RUUSTINNA

The rich and varied lunch buffet at Ruustinna includes fresh salads, house bread, main courses, and sweet desserts with coffee. We are always looking to bring a twist to a familiar meal, favouring clean and domestic ingredients. Ruustinna features two large halls and a summer terrace. Our café built in an ancient granary and evening sun terrace facing the beach are open in the evenings too during the summer season.

Our catering service makes delicacies and delivers them to your home or celebration location. You can also book Ruustinna as the location for your own celebration. We offer overnight stays in our idyllic rooms and serve breakfast with a lakeside view. Our beachside sauna is available for rent as agreed.

OPEN

detailed information
on our website.

www.ruustinna.com

info@ruustinna.com
041 319 2332

Paavontie 1,
43100 Saarijärvi





HH KEITTIÖ

HH Keittiö is a kitchen in the shop of the diverse, high-quality, national store chain Halpa-Halli. We offer lunch, burger meals, and à la carte.

A tasty and affordable buffet lunch available Mon-Sat at 10.30 a.m. to 3 p.m.

OPEN Mon-Sat 10 a.m. to 3 p.m.

www.halpahalli.fi

020 718 3911

Jyväskylän tie 33, 43100 Saarijärvi



KARHUN KATTILA

Enjoy your morning coffee, lunch, or afternoon tea with us. We serve home cooking that is made by us to the greatest possible extent.

Buffet lunch served on weekdays at 11 a.m. to 1 p.m.

OPEN Mon-Fri 8 a.m. to 2 p.m.

www.karhunkattila.fi

041 317 2663

Sivulantie 11, 43100 Saarijärvi



CAFÉ-RESTAURANT LINNAN LIISA

Linna Liisa's varied cuisine includes lunch and à la carte dishes, Xmeal burgers and Pizza Varikko pizzas. You can eat on site or buy along. Our store offers basic food, drinks and ice cream as well as car accessories. Alcohol license, summer terrace!

In addition, direct sales of local producers of bread, pastries and handicrafts.



Lunch on weekdays at 10.30 a.m. to 2 p.m.

OPEN summer time

Mon-Thu 8 a.m. to 6 p.m.

Fri 8 a.m. to 7 p.m.

Sat-Sun 10 a.m. to 6 p.m.

detailed information on our website.

OPEN winter time

Mon-Fri 8 a.m. to 6 p.m.

Sat 10 a.m. to 5 p.m.

www.linnanliisa.fi

040 521 0978

Linnan yritystie 2, 43100 Saarijärvi





SAARIJÄRVI PIZZERIA KEBAB & RESTAURANT ISABELLA

Kebabs, pizzas, salads, falafels. Eat on the spot or order to go!

Full alcohol licence.

Buffet lunch served on weekdays at 10.30 a.m. to 2 p.m.

OPEN

Mon-Sat 10.30 a.m. to 9 p.m.

Sun 11 a.m. to 9 p.m.

014 421 554

Paavontie 15, 43100 Saarijärvi



PRARICHAT

Delicious Thai food on the menu.

Buffet lunch served on weekdays at 10.30 a.m. to 2 p.m.

OPEN

Mon-Web 10.30 a.m. to 4 p.m.

Thu-Fri 10.30 a.m. to 8 p.m.

Sat-Sun 12 noon to 8 p.m.

Ilolantie 15, 43100 Saarijärvi | 040 355 8577



PAPA'S PIZZERIA

Pizza, kebab, doner, vegetarian Vöner kebab and salads.

You can find us at

Jyväs kyläntie 35 c, 43100 Saarijärvi

OPEN

Mon-Thu 11 a.m. to 8 p.m.

Pe-la 11 a.m. to 9 p.m.

Su 12 noon to 9 p.m.

www.papaspizzeria.fi | 045 184 6006



MADO BURGER

We offer incredibly delicious food, including burgers, pizza, kebabs, as well as salads and falafel.

OPEN

Fri 4 p.m. to 5 a.m.

Sat 3 p.m. to 5 a.m.

Sun 4 p.m. to 5 a.m.

Ilolantie 15, Saarijärvi | 040 705 4513





SEO RANTA-KIVI

Full-service service station with an amazing lakeside view. Enjoy delicious Rolls hamburgers, menu courses, sweet pastries, and the original Valio soft ice on our terrace, naturally complemented with both cold and hot drinks.

Our Fixus spare part and repair shop services will assist you with almost any motor vehicle issue, as well as air conditioning service, tyre sales, and repair/maintenance jobs. We also have a car wash spot, electric vehicle charging spot, trailer rental, and liquefied gas sales.

OPEN summer time
Mon–Fri 7 a.m. to 7 p.m.
Sat 10 a.m. to 7 p.m.
Sun 12 noon to 5 p.m.

Rolls summer time
Mon–Fri 10 a.m. to 7 p.m.
Sat 10 a.m. to 7 p.m.
Sun 12 noon to 5 p.m.

OPEN winter time
Mon–Fri 7 a.m. to 5 p.m.
Sat 10 a.m. to 5 p.m.
Sun closed



014 333 3777 / Rolls 044 734 0223
Jyväskylän tie 34, 43100 Saarijärvi

Rolls winter time
Mon–Fri 11 a.m. to 5 p.m.
Sat 11 a.m. to 5 p.m. | Sun closed



Post's
pickup point
and laundry
service point

Buffet lunch klo 11 a.m.–2.30 p.m.

EVÄSTUPA

Multi-Service Point in the center of Pylkönmäki! Services include Tarmo convenience store, Alko pick-up point, lunch cafeteria, grill, and café. We offer local groceries, gift items, cut flowers, and summer flower sales in season. Conference room, party venues, and catering services are available. In the treatment room, we offer appointments with a masseuse, a foot care specialist, and a hairdresser on alternate days. Additionally, we sell fishing permits.

OPEN
Mon–Sat 11 a.m. to 7 p.m.
Sun 11 a.m. to 4 p.m.
040 184 0227



www.evastupa.fi

Keskustie 28, 43440 Pylkönmäki



GRÖTÖREN

At Cafe Grötören, we bake pies every day. Our customers' favorite pies are cinnamon and apple pies. We also offer a rare Swedish dish called 'kroppkakor'. Additionally, we make our own chocolate and meringues. We also roast coffee using the traditional 1800s method on top of wood.

OPEN
Mon–Fri 10 a.m. to 4 p.m.
Sat 10 a.m. to 2 p.m.
rd.852@outlook.com
Kauppakatu 6, Saarijärvi





AITTAKAHVILA RUUSTINNA

Experience the atmosphere of an ancient log barn! The Barn Cafe offers Ruustinna's fresh, sweet, and savoury pastries and hot meals. Dark organic coffee, Teeleidi's teas and Poikain Parhaat's tasty coffees in a press pot are wonderfully refreshing.

You can also treat yourself to Minetti's ice creams and enjoy our personalised selection of beverages on our terrace in the beautiful lake scenery. In connection with the Barn Cafe, you will also find barn galleries - come and familiarise yourself with the summer exhibitions and get your souvenirs at the same time. Welcome!

OPEN

detailed information
on our website.

www.ruustinna.com

info@ruustinna.com
041 319 2332

Paavontie 1,
43100 Saarijärvi



SAARIJÄRVEN TYÖTTÖMÄT RY/ LUNCH CAFÉ

The name of the association is Saarijärven Työttömät r.y., located in the city of Saarijärvi. The association is a member of the National Cooperation Organization for the Unemployed.

We offer home-cooked lunches on weekdays from 11 am to 2 pm. Additionally, we have a small café offering a variety of items such as rolls, pastries, sandwiches, sweet treats, soft drinks, and ice cream. We also provide meeting and event arrangements. Warmly welcome!

OPEN

Mon–Fri 7 a.m. to 4 p.m.
Lunch 11 a.m. to 2 p.m.

www.saarijarventyottomat.blogspot.com

040 198 0884

Paavontie 17,
43100 Saarijärvi



PROGRAM

Sun 30.6. 18.00 Folk Music Group Kopla,
feat. **Ville Ojanen** Saarijärvi School & Culture
Center, tickets 20€

Mon 1.7. 19.00 Ismo Alanko yksin
Saarijärvi School & Culture Center, tickets 45€

**Wed 3.7. 18.00 Student Concert of Kirmot
Singing Workshop,** Saarijärvi School &
Culture Center, tickets 15€

Thurs 4.7. 19.00 Altamullan Road
Johanna Iivanainen & Johanna Kurkela
Saarijärvi School & Culture Center, tickets 35€

**Fri 5.7. 20.00-2.00 Steve 'n' Seagulls,
Spring Teeth, Autiolahden Kaiu**
Kukonhiekan huvikeskus, tickets 32€

Sat 6.7. 14.00 CONCERT FOR KIDS ä-Oy:
Girmåsaurus ynnä muita eliöitä
Runebergin puisto, FREE ENTRY

**Sun 7.7. klo 15 Pylkön Pojat Mikael Konttinen
& Tommi Soidinmäki, guests Jenna
Bågeberg & Markku Aro**
Yrittävän talo, Pylkönmäki, tickets 30€

KIRMOT

MUSIC FESTIVAL

30.6.-7.7.2024



www.visitsaarijarvi.fi



Visit
Saarijärvi



visitsaarijarvi.fi



RECYCLING CENTRE

The recycling centre is Saarijärvi's very own circulation centre for all kinds of stuff. We have what you'll need at home, at the summer cabin, and for your wardrobe; our selection includes clothes, shoes, home textiles, dishes, sport equipment, children's things, furniture, and small appliances. The centre also makes shop products by hand with recycled materials.

We accept clean and intact donated items. Donate your unnecessary things and we'll give them a second chance!

Make
discoveries
and
donate!



The Luontotupa house is connected to the recycling centre. Luontotupa is available for meetings and holds exhibits of animals, plants, and rocks from the Finnish Geological Survey!



OPEN

Mon–Tue 10 a.m. to 5 p.m.
Wed–Fri 9 a.m. to 4 p.m.
Sat 9 a.m. to 2 p.m.
Sun closed

044 459 8307
Oppitie 2, 43100 Saarijärvi





i
Visit
Saarijärvi

Saarijärvi Products
T-shirt and mug

TAITOKESKUS SAARIJÄRVI

Taitokeskus is a house full of diverse handicrafts.

The shop includes products from Finnish handicraft entrepreneurs - including Wilawood, Hunanikkarit and Leena Aijasaho - and a diverse selection of materials. Taitokeskus offers weaving opportunities throughout the year; short courses are organised during the working season. An Art primary education handicraft school also operates at Taitokeskus; groups are organised for children and adults. Art and handicraft exhibitions are arranged at Vinttigalleria Gallery during the summer season. Taitokeskus is located in the centre of Saarijärvi on the Palavasalmi shore, in the cultural surroundings of Sofianranta. Sofianranta's culture-historically valuable area belongs to Saarijärvi cultural route's destinations.

OPEN	Tue–Thu	10 a.m. to 5 p.m.
	Fri	10 a.m. to 3 p.m.
25.6.–31.7.	Tue–Fri	10 a.m. to 5 p.m.
	Sat	10 a.m. to 2 p.m.
	Closed in August	

[www.taitokeskisuomi.fi/
taitokeskus-saarijarvi](http://www.taitokeskisuomi.fi/taitokeskus-saarijarvi)



050 413 1013
Paavontie 4, 43100 Saarijärvi



LAHJAPISTE

At our place, you can make wonderful finds at the flea market and in the gift and craft supply shop. We also have a wide selection of yarns for craft enthusiasts.

We offer a café and a shop featuring local products. Additionally, inquire about our beauty salon and massage services for more details!

OPEN
Mon–Fri 10 a.m. to 5 p.m.
Sat 10 a.m. to 3 p.m.



045 625 0344 myynti@lahjapiste.fi
Jukolankuja 4 A, 43100 Saarijärvi



ELÄINPALVELU ÆSA BRA

Waddle into our full-service pet store! We house a wide selection of pet foods and supplies, aquarium fish, horse supplies, and various treatment services including trimming and nail cutting. Our selection includes beautiful domestic handicrafts such as animal-themed jewellery, welcome-signs, and soap. Fresh water available for dogs in the summer at the Æsa Bar on the Ilolantie side. All pets are welcome!



OPEN
Mon–Fri 11 a.m. to 6 p.m.
Sat 11 a.m. to 2 p.m.



040 743 8784, info@aesabra.fi
Kauppakatu 8, 43100 Saarijärvi



SAUNA WHERE YOU NEED IT

Today everything is mobile, even saunas! Rent a unique trolley sauna for yourself, for your community or your event.

Jolinki Oy offers tourists for rent a trolley sauna, which you can take with you wherever your journey takes you. Make your hiking trip a little more atmospheric and end it with a delicious soak? Surprise your friends by giving them a sauna where you want? Have a memorable party, crowned by the delicious steaming of Harvia's stove with a wide viewing window?

The trolley sauna can be pulled with a B driver's license and it can be picked up from the center of Saarijärvi. If needed, we also bring the sauna for you to the site and relax the participants, just according to your needs. Also ask for programmatic services!

www.jolinki.fi

pasi.saarinen@jolinki.fi
050 408 0366



LEENA AIJASALO - VOIMAVALOKUVA

Photography services in Saarijärvi. Pillows, mobile phone cases, postcards and power cards from nature photos. Key flag products made in Finland. Photo boards or posters on request.



VANHAINAVARAN ERIKOISLIIKE KAIHO

A small and cosy antique shop, where you can find lamps from the 1930s-1970s, books, metal fins and other interesting items. In the backroom, there is an even smaller art shop. You can find Kaiho on Saarijärvi's cultural route at Sofianranta, in a nationally valuable cultural environment, at Paavontie 4 b 43100 Saarijärvi.

Open on Saturdays at 10 am - 2 pm, in July during weekdays at 10 am - 5 pm or upon agreement

You can find our product range:
www.voimavalokuva.fi/kauppa
050 432 5763
Lannevesi

www.facebook.com/VanhaintavarainkauppaKaiho
velltuomo.kuusela@gmail.com
040 067 7391



Local
veterinary
service.

KATTIA KANSSA VETERINARY CLINIC

Welcome to our warm-spirited clinic! Located in the centre of Saarijärvi, our quiet reception is easy to get to, and there are parking spaces right in front of the reception. We offer basic veterinary services for small animals, including vaccinations, microchips, health checks, sampling, and the most common surgeries.

Our expertise includes dental procedures for dogs and cats. We perform tartar removal and surgical dental extraction procedures. We have inhalation anaesthesia, a dental drill and a dental X-ray machine.

The clinic sells, for example, dietary supplements, treatment products and Royal Canin food.

Check our current opening hours on our website.
Book appointments online at www.kattiakanssa.fi

044 977 0029
Myllytie 1, 43100 SAARIJÄRVI



You can also find us on
Facebook and Instagram.



LAMPAAMO

Lampaamo is a craft shop located in Kekkilä, Saarijärvi, on the Uittoeniemi farm, where you can find genuine handmade products. The selection includes e.g. soap, skin care products, jewelry, cleaning products and hand-spun woolen yarn. At Lampaamo, you can pet sheep and horses during the shop's opening hours. Events for the whole family are organized in the grounds of the farm throughout the year.

lampaamo.fi
lampaamo@gmail.com
+358 50 345 4689



Isniementie 275, 43100 Saarijärvi



M-MARKET PYLKÖNMÄKI

Groceries, daily essentials, gas, café, and Veikkaus (Finnish national lottery).

The M-chain is a Finnish retail chain established by Independent Retailers in 2006, currently comprising approximately 50 stores nationwide.

Mon 9 a.m. to 7 p.m. | Tue 9 a.m. to 7 p.m.
Wed 9 a.m. to 7 p.m. | Thu 9 a.m. to 7 p.m.
Fri 9 a.m. to 7 p.m. | Sat 9 a.m. to 6 p.m.
Sun 1 noon to 4 p.m.

m-ketju.fi
auli.rahikainen@m-ketju.fi
+358 41 318 4458



Keskustie 26, 43440 Pyлкönmäki



SAHINAHO HONEY

Sahinaho Honey Farm has carried out apiculture and honey production since 1984.

We produce multi flower honey and speciality honey. Honey can also be purchased in your own containers during the harvest season. Our honey has also been acknowledged nationally for its quality in Finland's Best Honey competition organised by SML.

In addition to this, we raise queen bees and provide pollination services for local farmers.

0400 958 752
jormasahinaho@gmail.com



www.sahinahonhunaja.wordpress.com
Ranta-Hänniläntie 161, 43100 Saarijärvi



MANNILAN KARTANO

Mannilan Kartano in Saarijärvi offers a luxurious and atmospheric venue for rent for various events such as celebrations, meetings, and gatherings. The building and surrounding grounds provide ideal settings for events ranging from small to medium-sized gatherings. Seating is available for 80 people.

040 838 6546 (Ville)
040 527 7451 (Hannele)



www.mannilankartano.fi
Mannilantie 9 43100 Saarijärvi



PUSKIANMÄEN TILA

Puskianmäen Tila specializes in growing strawberries and raspberries. During the summer, we sell them fresh, and in winter, they are available frozen.

In the autumn, our farm operates a juice station, where customers' apples, pears, and berries are pressed into fresh juice. Using our own farm's berries and apples, we produce juices and jams.

Our small farm shop offers a variety of farm products, which vary according to the growing season.

040 849 5961
terttuhakala60@gmail.com



www.puskianmaki.fi
Pajupurontie 1370, 43100 Saarijärvi



SUMMASSAARI KARTANO (TSASOUNA)

You can take a moment in the Summassaari Tsasouna prayer room designed by Sulo Suuntala.

Local honey available in our honey shop.

OPEN every day!
Café during the summer season.

0400 340 631
Haikantie 36 43130 Tarvaala

PAMPERING AND WELLNESS

f **KAUNEUS- JA HUIUSKLINIKKA JAANA**
Cosmetological treatments include facials, manicures, pedicures, permanent tinting/curling, microneedling, and Bemer treatments. Hair examinations and treatments with a medical microscope. We sell high-quality skin care and hair products and supplements. Open by appointment from 10 am (flexible working hours) on Sat–Sun. www.kauneusjahiusklinikka.fi
0400 533 767
Paavontie 24 A 19, 43100 Saarijärvi

f **KAUNEUS JA HYVÄ OLO ZARA**
Our services include cosmetological treatments, lymphatic massage, LipoLaser treatments, spray tans, and full-body treatments. Our product selection includes organic cosmetics. Mon–Fri by appointment. 0400 013 804
Paavonaukio 3, 43100 Saarijärvi

f **KAUNEUSKESKUS STUDIO PMK**
Our services include barber and hairdresser services, lash extension, gel and artificial nails, lash and brow permanent colouring, make-up, and make-up sales. Barber-hairdressers:
Kati 040 7204 769
045 203 3063
Kauppakatu 6, 43100 Saarijärvi

MARKETS & OTHER SERVICES

ALKO

Mon–Thu 9 a.m. to 6 p.m., Fri 9 a.m. to 9 p.m., Sat 9 a.m. to 6 p.m.
Torikatu 5, 43100 Saarijärvi

f **HALPA-HALLI**
Mon–Sat 8 a.m. to 9 p.m., Sun 10 a.m. to 9 p.m. Jyväskyläntie 33, Saarijärvi

f **K-MARKET SAARIJÄRVI**
Mon–Fri 7 a.m. to 9 p.m., Sat 7 a.m. to 7 p.m., Sun 10 a.m. to 7 p.m.
Paavontie 28, 43100 Saarijärvi

f **K-SUPERMARKET MINTTU**
Mon–Sat 7 a.m. to 9 p.m., Sun 9 a.m. to 9 p.m. Torikatu 5, 43100 Saarijärvi

LIDL

Mon–Fri 8 a.m. to 9 p.m., Sat 8 a.m. to 7 p.m., Sun 10 a.m. to 7 p.m.
Jyväskyläntie 31 A, 43100 Saarijärvi

f **M-MARKET PYLKÖNMÄKI**
Mon–Fri 9 a.m. to 7 p.m., Sat 9 a.m. to 6 p.m., Sun 12 noon to 4 p.m.
Keskustie 26, 43440 Pylkönmäki

f **KAUNEUSPISTE SINI ILONA**
Services include, for example, eyelash extensions, permanent eyelash curling, eyebrow lamination, permanent eyelash and eyebrow tinting, party make-up, facials, and gel polishes. We also sell professional cosmetics and gift cards. Online booking at:
slotti.fi/booking/kauneuspistesiniilona/
Kauppakatu 1, 43100 Saarijärvi,
050 536 4349

f **ONNELA, SAARIJÄRVI**
CHILD-FRIENDLY HOME HAIR SALON
SIRJA OITTINEN
Haircuts in a child-friendly environment at Mannila. Contact us, even at short notice, for haircuts for adults or children. As a special service, we also offer hairstyling for special occasions, including home visits.
Sirja Oittinen, Herajärventie 4,
040 527 1434

f **S-MARKET SAARIJÄRVI**
Mon–Sat 7 a.m. to 10 p.m., Sun 9 a.m. to 6 p.m.
Kauppakatu 2, 43100 Saarijärvi

f **TOKMANNI**
Mon–Sat 8 a.m. to 8 p.m., Sun 11 a.m. to 6 p.m. Kauppakatu 5
Mon–Fri 8 a.m. to 8 p.m., Sat 8 a.m. to 7 p.m., Sun 11 a.m. to 5 p.m.
Jyväskyläntie 19

f **TARMON KALAMESTARIT OY**
Tarmon Kalamestarit Oy offers locally sourced rainbow trout products directly from the smoking oven at the Saarijärvi local sales point. Open every odd week, on Wednesdays and Thursdays from 3 p.m. to 6 p.m. Welcome!
Viitasaarentie 184,
43100 saarijärvi
www.tarmonkalamestarit.fi

EVENING AND NIGHT-TIME ENTERTAINMENT



KARAOKE BAR KULMA

Opening hours on [Facebook!](#)
Kauppakatu 7, 43100 Saarijärvi



RAVINTOLA SEURAHUONE

Opening hours on [Facebook!](#)
Ilolantie 16, 43100 Saarijärvi



KUKONHIEKAN HUVIKESKUS

Open from Mayday eve until
mid-October, dancing every summer
saturday.
Kukonhiekantie 35, 43100 Saarijärvi,
lisätiedot: www.kukonhiekkka.com



FLOWERS AND SHOPPING



KÄRJEN PUUTARHA TMI

We grow summer flowers in greenhouses from seeds and cuttings from March onwards. Our selection also includes various hanging baskets, potted plants, herb and vegetable seedlings. As well as composts and supplies. Come and enjoy a spring excursion at Linna. See and experience the miracle of growth and the splendour of colours. Welcome to shop at your local garden from the beginning of May. Open: 2.5.–20.6.2024, Mon–Fri 9 a.m. to 7 p.m., Sat–Sun 9 a.m. to 5 p.m. Otherwise, by appointment as well. www.karjenpuutarha.fi
0400 858 330 / 040 707 5534
Summakoskentie 170, 43100 Saarijärvi



SAARIJÄRVEN KUKKAKULMA

A friendly and well-stocked florist in downtown Saarijärvi.
We make beautiful bouquets using only the best quality cut flowers.
We also offer seasonal flowers, house plants, and various gift items depending on the season.



You can place an order for flowers in our online shop at saarijarvenkukkakulma.ekukka.fi

Mon–Fri 9 a.m. to 5 p.m., Sat 9 a.m. to 2 p.m., Sun open only on confirmation days. 8 a.m to 1 p.m.
www.saarijarvenkukkakulma.fi
014 421 570
Virastotie 2, 43100 Saarijärvi



WANHA MESTARI

Sing karaoke. We also offer live music, check gigs and opening hours on [Facebook](#) and [Instagram](#). Kauppakatu 7, 43100 Saarijärvi

You can also find our opening hours on our website:

www.wanhamestari.fi/ravintolat/saarijarvi

FLEA MARKETS



LAHJAPISTE

Mon–Fri 10 a.m. to 5 p.m.
Sat 10 a.m. to 3 p.m.
045 625 0344
Jukolanukuja 4 A, 43100 Saarijärvi



SAARIJÄRVEN KIERRÄTYSKESKUS

Mon–Tue 10 a.m. to 5 p.m., Wed–Fri 9 a.m. to 4 p.m., Sat 9 a.m. to 2 p.m.
044 459 8307, Oppitie 2, 43100 Saarijärvi

SHOPPING



KELLOLIIKE PORI

In our selection jewellery, watches, corporate presents.
Mon–Fri 10 a.m. to 5 p.m.
014 421 202
Kauppakatu 6, 43100 Saarijärvi

KENKÄ-PUU

We offer a selection of footwear and bags.
Mon–Thu 9 a.m. to 5 p.m., Fri 10 a.m. to 6 p.m. 014 471 434
Jyväskylätie 36, 43100 Saarijärvi

OPTICIAN

INSTRUMENTARIUM

Mon–Wed 9 a.m. to 5 p.m.,
Thu–Sun closed.
020 332 846
Kauppakatu 10, 43100 Saarijärvi

SILMÄASEMA SAARIJÄRVI

Mon–Fri 10 a.m. to 5.30 p.m.
0207 122 218
Kauppakatu 2, 43100 Saarijärvi

GOOD TO KNOW

SAARIJÄRVI PHARMACY

Mon–Fri 9 a.m. to 7 p.m. (During summer season Mon–Fri 9 a.m. to 6 p.m.), Sat 9 a.m. to 2 p.m., Sun 11 a.m. to 2 p.m.
Kauppakatu 2, 43100 Saarijärvi.
Next to the S-Market.

SAARIJÄRVI HEALTH STATION

Saarijärven terveysasema

First aid weekdays 8 a.m. to 6 p.m., weekends and holidays 8 a.m. to 3 p.m. During other times, closest first aid is available in Jyväskylä.
044 459 8500

Sairaalantie 2, 43100 Saarijärvi

Hospital Nova

When the Saarijärvi health station is closed, please call the number 116 117 for an evaluation and follow the instructions you receive.

Keskussairaalantie 19, 40620 Jyväskylä

In case of emergency call 112

POSTAL SERVICE

In the same building as the K-Supermarket Minttu. Mon–Sat 7 a.m. to 9 p.m., Sun 9 a.m. to 9 p.m.
Torikatu 5, 43100 Saarijärvi

TAXI TRAFFIC

KESKI-SUOMEN ALUETAKSI

0100 866 44

BUS STOP

Check bus schedules at www.matkahuolto.fi
Torikatu 6, 43100 Saarijärvi

CLOSEST RAILWAY STATION

JYVÄSKYLÄ RAILWAY STATION

Hannikaisenkatu 20, 40100 Jyväskylä
Distance to Saarijärvi some 65 kilometres.

CLOSEST AIRPORT

TIKKAKOSKI AIRPORT

Lentoasemantie 70, 41160 Tikkakoski
Distance to Saarijärvi some 45 kilometres.

CAR REPAIR SERVICES

AD JUHAN AUTOHUOLTO

All repairs and services, Vianor-partnered tyre sales, 24/7 carwash. Cars and vans, trailers, boat trailers, ski boxes, and party tents for rent.

Open weekdays 8 a.m. to 4.30 p.m.
014 423 090

Jyväskylänentie 31, 43100 Saarijärvi

SAARIJÄRVEN AUTOPALVELU OY

Flexible spare parts and repair service, available also on weekends as needed.
014 333 3777

Jyväskylänentie 34, 43100 Saarijärvi

SAARIJÄRVEN AUTOTARVIKE OY

A wide selection of solutions for your car: service, repairs, spare parts, supplies, chemicals, and paints.

010 281 2880

Open weekdays 7.30 a.m. to 4.30 p.m.

Sara-ahontie 15, 43100 Saarijärvi

TKR-AUTOKORJAAMO AUTOASI SAARIJÄRVI

Affordable repair shop offering a full range of services and repair shop facilities for all makes and models. Euro-master tyre sales. We offer substitute cars for rent while you wait for repairs.

0400 649 292 / 050 5555 670

Open weekdays 8 a.m. to 4.30 p.m.

Kunniavuorentie 5, 43100 Saarijärvi

PETROL STATIONS

CAFÉ & RESTAURANT LINNAN LIISA

Summer season Mon–Thu 8 a.m. to 6 p.m., Fri 8 a.m. to 7 p.m., Sat–Sun 10 a.m. to 6 p.m., **winter season** Mon–Fri 8 a.m. to 6 p.m., Sat 10 a.m. to 5 p.m.
www.linnanliisa.fi | 040 521 0979

Jyväskylänentie 705, 43100 Saarijärvi

SEO RANTA-KIVI

Summer season Mon–Fri 7 a.m. to 7 p.m., Sat 10 a.m. to 7 p.m., Sun 12 a.m. to 5 p.m. **Rolls** Mon–Fri 10 a.m. to 7 p.m., Sat 10 a.m. to 7 p.m., Sun 12 noon to 5 p.m. **Winter season** Mon–Fri 7 a.m. to 5 p.m., Sat 10 a.m. to 5 p.m., Sun closed. **Rolls** Mon–Fri 11 a.m. to 5 p.m., Sat 11 a.m. to 5 p.m. Sun closed | 014 333 3777
Jyväskylänentie 34, 43100 Saarijärvi
www.facebook.com/RantaKivi





HUSUAHO

Luhta

Hämeenniemi

Pieni-Lu

Tarvaala

Satosuo

RAHKOLA

HIETALAHTI

SARA-AHO



Kukonhiekkä

Tarvaala

Tarvaala

Satosuo

Kukonhiekkä

59



TOURISM SERVICES IN THE TOWN CENTER

The items are marked on the map on the previous spread according to the colour codes.

COMMON SERVICES

- 1 Post office
- 2 Bus stop
- + Health center
- i Tourist information

CULTURE DESTINATIONS

- 1 Saarijärvi museum, Toivi Järvinen art home
- 2 Stone Age Village
- 3 Gentry home museum & Runeberg exhibition
- 4 Tapper family Juhola House
- 5 Herala artist residence
- 6 Veijari Activity Park
- 7 Kappelilampi Summer Café
- 8 Saarijärvi church
- 9 Atelier Leijonatorni
- 10 Summassaari Tsasouna

NATURE DESTINATIONS

- 11 Julmat Lammit
- 12 Haikankärki
- 13 Ancient and Nature Paths

THINGS TO DO

- 14 Paavonrinteet ja Kusiaismäki Ski Center
- 15 Swimming hall - Fitness centre Aarresaari
Air gun range
- 16 Liikelataamo
- 17 Disc golf Kusiaismäki
- 18 Disc golf Summassaari
Summassaari training stairs
- 19 Disc golf Ahvenlampi
- 20 Kukonhiekka entertainment centre
- 21 Autiolahti beach
Autiolahti beach volley
- 22 Ice-hole swimming
- 23 Mansikkaniemi beach
- 24 Runeberg's Park

- 25 Saarijärvi library,
Equipment rental
- 26 Ice Arena

ACCOMMODATION

- 27 Ahvenlampi Camping
- 28 Apartment 28
- 29 Onnela
- 30 Kukonhiekka Vibes
- 31 Hämeenniemi
- 32 Leponiemi
- 33 Summassaari beach
- 34 Kultaranta Mansion

DINING

- 35 Frisee
- 36 Saarijärven Ruustinna
- 37 HH Keittiö
- 38 Karhun Kattila
- 39 SEO Ranta-Kivi
- 40 Saarijärven Pizzeria Kebab &
Ravintola Isabella
- 41 Prarichat
- 42 Papa's pizzeria
- 43 Mado Burger
- 44 Grötören
- 45 Saarijärven työttömät ry/
Lunch Café

SHOPPING AND SERVICES

- 46 Recycling centre
- i 47 Taitokeskus Saarijärvi

- 48 Lahjapiste
- 49 Eläinpalvelu Æsa Bra
- 50 Karaoke Bar Kulma
- 51 Wanha Mestari
- 52 Kauneus- ja Hiusklinikka Jaana
- 53 Kauneus ja HyväOlo Zara
- 54 Kauneuskeskus Studio PMK
- 55 Kauneuspiste Sini Ilona
- 56 Alko
- 37 Halpa Halli
- 57 K-Market Saarijärvi
- 58 K-Supermarket Minttu
- 59 Lidl
- 60 S-Market Saarijärvi
- 61 Tokmanni, keskusta
- 62 Tokmanni, Jyväskylätie
- 63 Saarijärven Kukkakulma
- 64 Kelloliike Porri
- 65 Kenkä-Puu
- 66 Instrumentarium
- 60 Silmäasema
- 60 Saarijärven Apteekki
- 67 AD Juhan Autohuolto
- 39 Ranta-kivi,
Saarijärven Autopalvelu Oy
- 68 Saarijärven Autotarvike Oy
- 69 TKR Autokorjaamo



Saarijärvi

See pages 64 and 65 for more information.



Campfire place



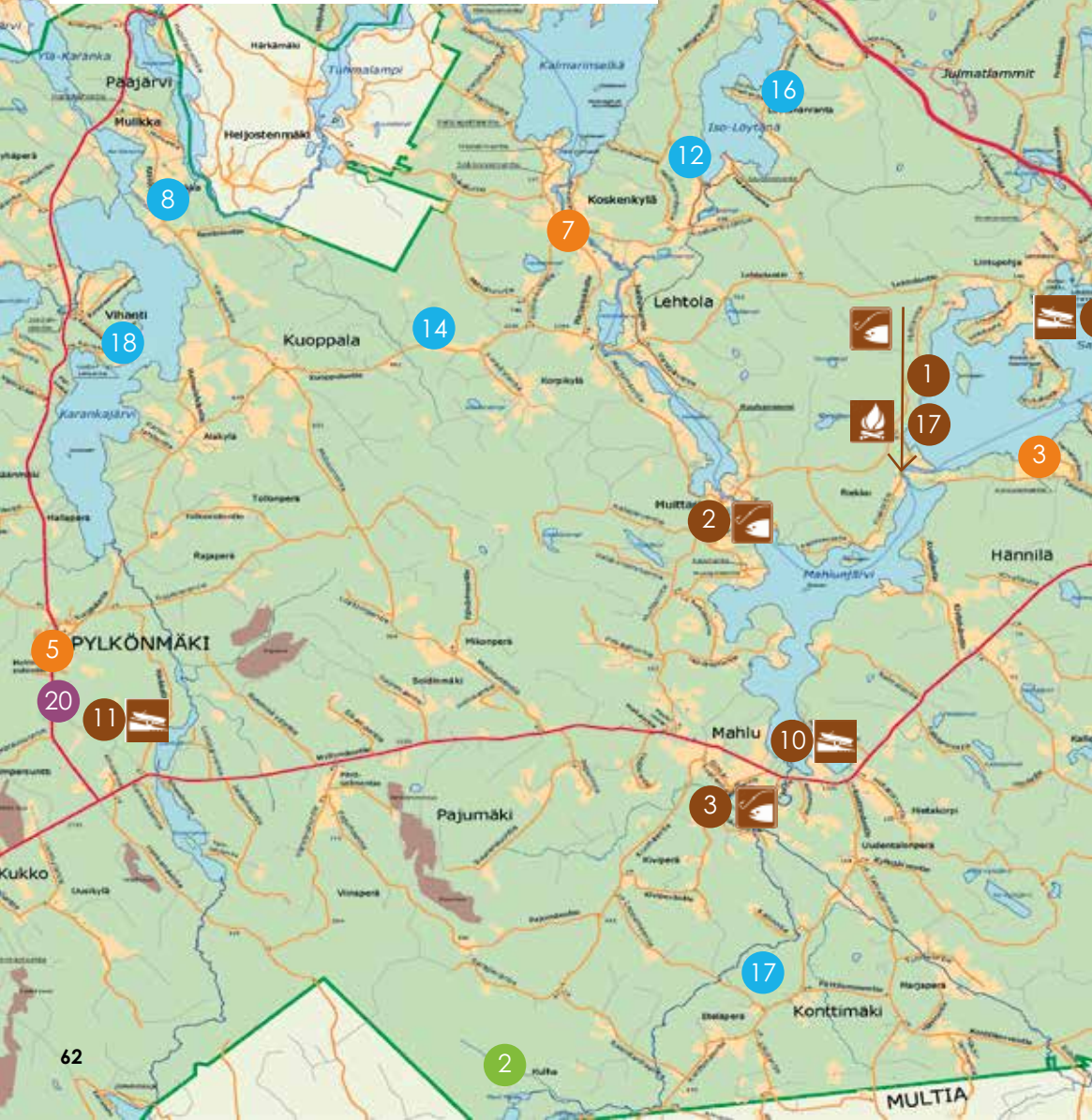
Lean-to / hut

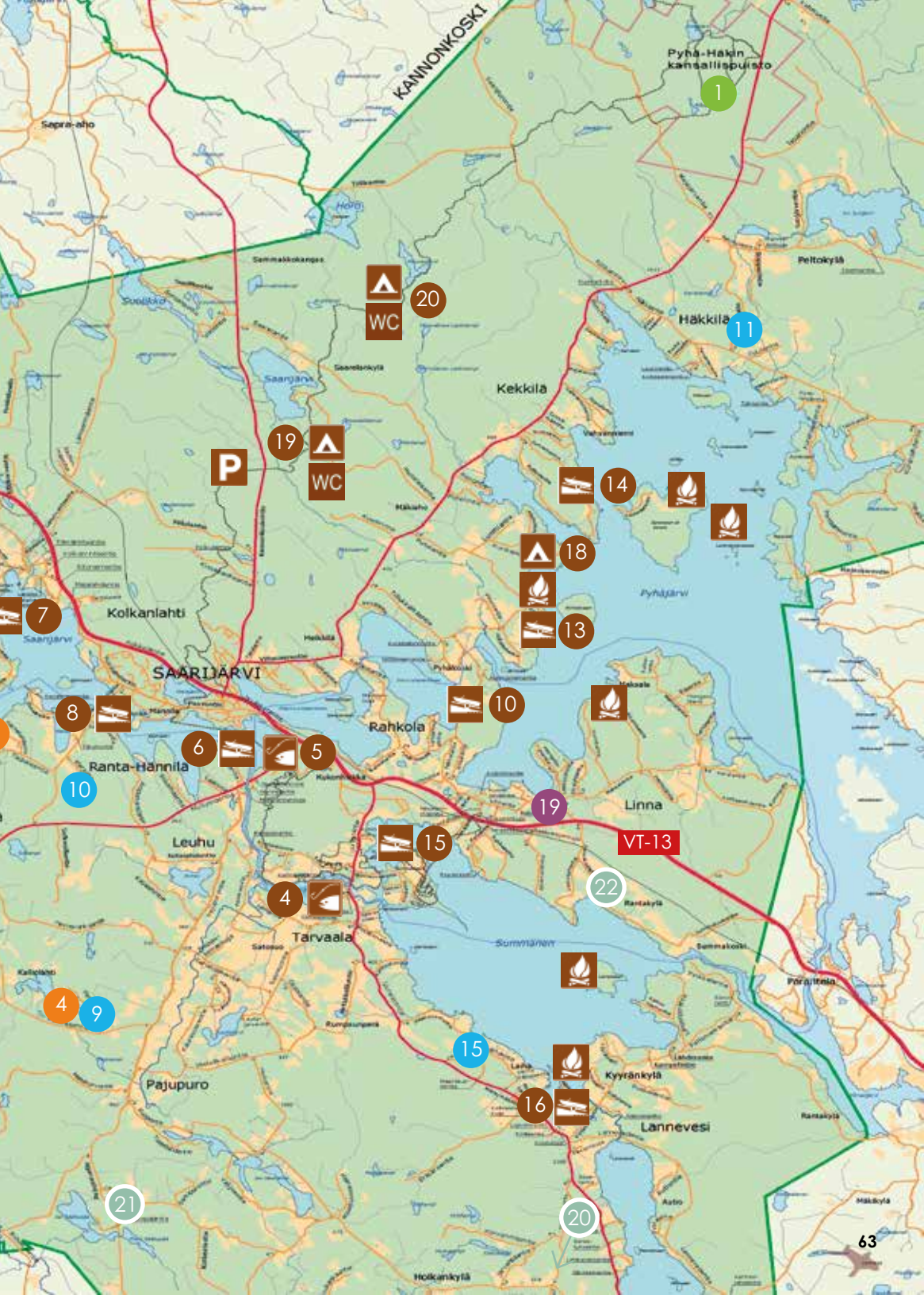


Boat launch location



Fishery





KANNONKOSKI

Pyhä-Häkin kansallispuisto

Sepro-aho

Sammakkokangas



20

1

Peltokylä

Häkkiälä

11

Kekkila



19



14



18



13

7

Kolkanihti

8

SAARIJÄRVI



10



10

6



5

Rahkola

10

Ranta-Hännilä

19

VT-13

Leuhu



15

22

Linna

4



Tarvaala



15

4

9

Pajupuro

15



16



16

Kyyränkylä

Lannevesi

21

20



TOURISM SERVICES OUTSIDE THE TOWN CENTER

The items are marked on the map on the previous spread according to the colour codes.

NATURE DESTINATIONS

- 1 Pyhä-Häkki National Park
- 2 Kulhanvuori ja Syväojarotko

THINGS TO DO

- 3 Finnish Yoga Institute
- 4 Horseback Riding, Purola Farm
- 5 Disc golf Pylkönmäki
- 6 Disc golf Kalmari
- 7 RoppiLax tourist farm

ACCOMMODATION

- 8 Jakolan Tila
- 9 Purola Farm
- 10 Farm House Hepoharju
- 11 Koskelan Farm
- 12 Lomakoivulehto
- 13 Lamminkankaan Lähde
- 14 Luttamäki Traditional Farm

- 15 Loutolan Farm
- 16 Sammallahti cottages
- 17 Konttimäen koulu
- 18 Pariisinranta

DINING

- 19 Café & Restaurant Linnan Liisa
- 20 Evästupa

SHOPPING AND SERVICES

- 21 Tmi Marika Svan - Relaxing energy treatments, floral drops and empowering paintings
- 22 Kärjen Puutarha Tmi

FISHING JA BOAT LAUNCH LOCATIONS HUTS AND CAMPFIRE LOCATIONS

RAPID FISHING LOCATIONS



- 1 Riekkonkoski**
Riekkontie 138
43250 Kolkanlahti
- 2 Muittarinkoski**
Muittarintie 574
43250 Kolkanlahti
- 3 Konttijoki-Kotajoki**
Silmäkoskentie 90
43220 Mahlu
- 4 Majakoski**
Kallinjärventie 2
43130 Tarvaala
- 5 Recreational fishing destination Pajulampi**

Parking lot

Hyppyrimäentie 1
43100 Saarijärvi

To ice

Asutustie 8
43100 Saarijärvi

To water

Hyppyrimäentie 1
43100 Saarijärvi

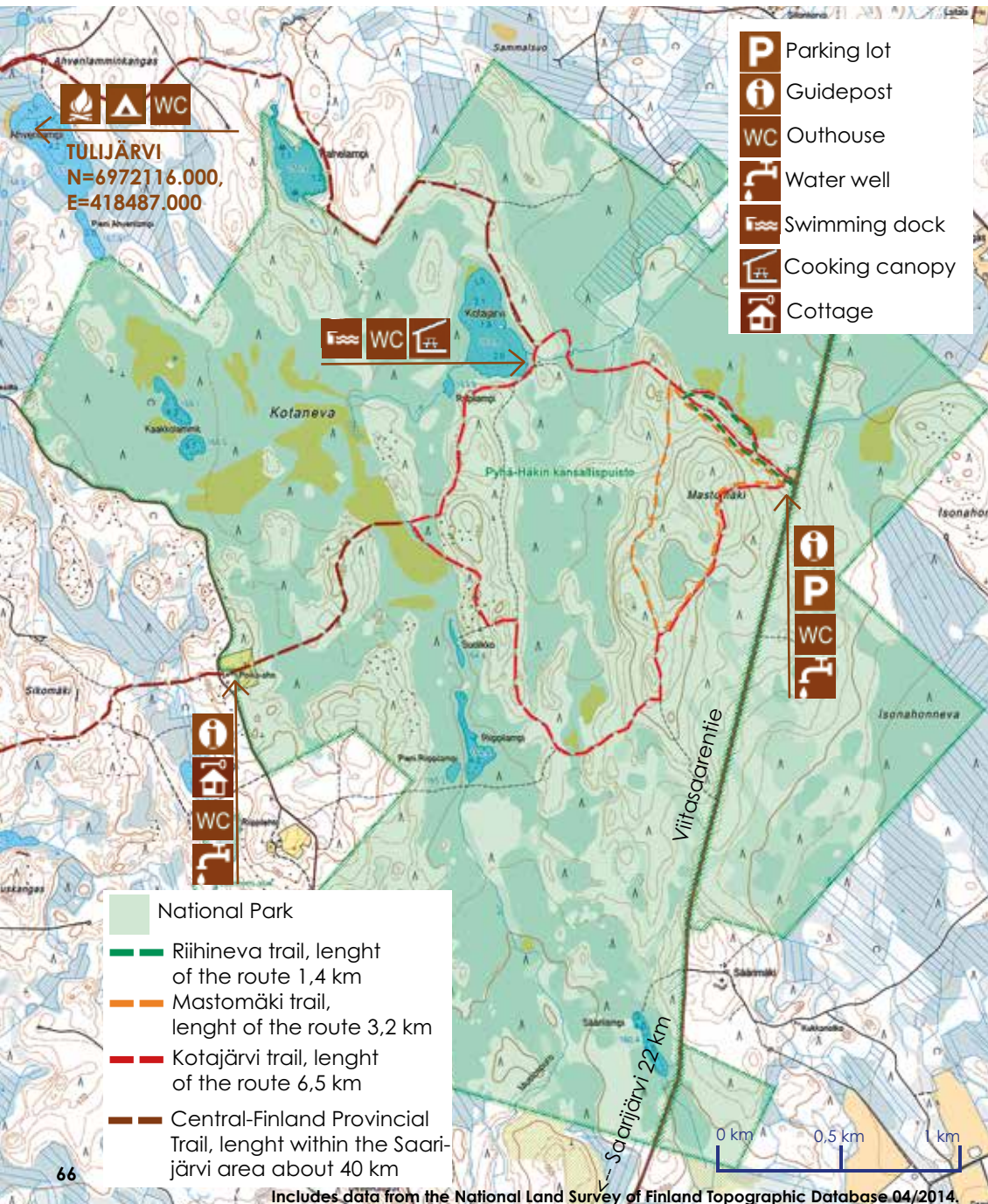
HUTS AND CAMPFIRE LOCATIONS



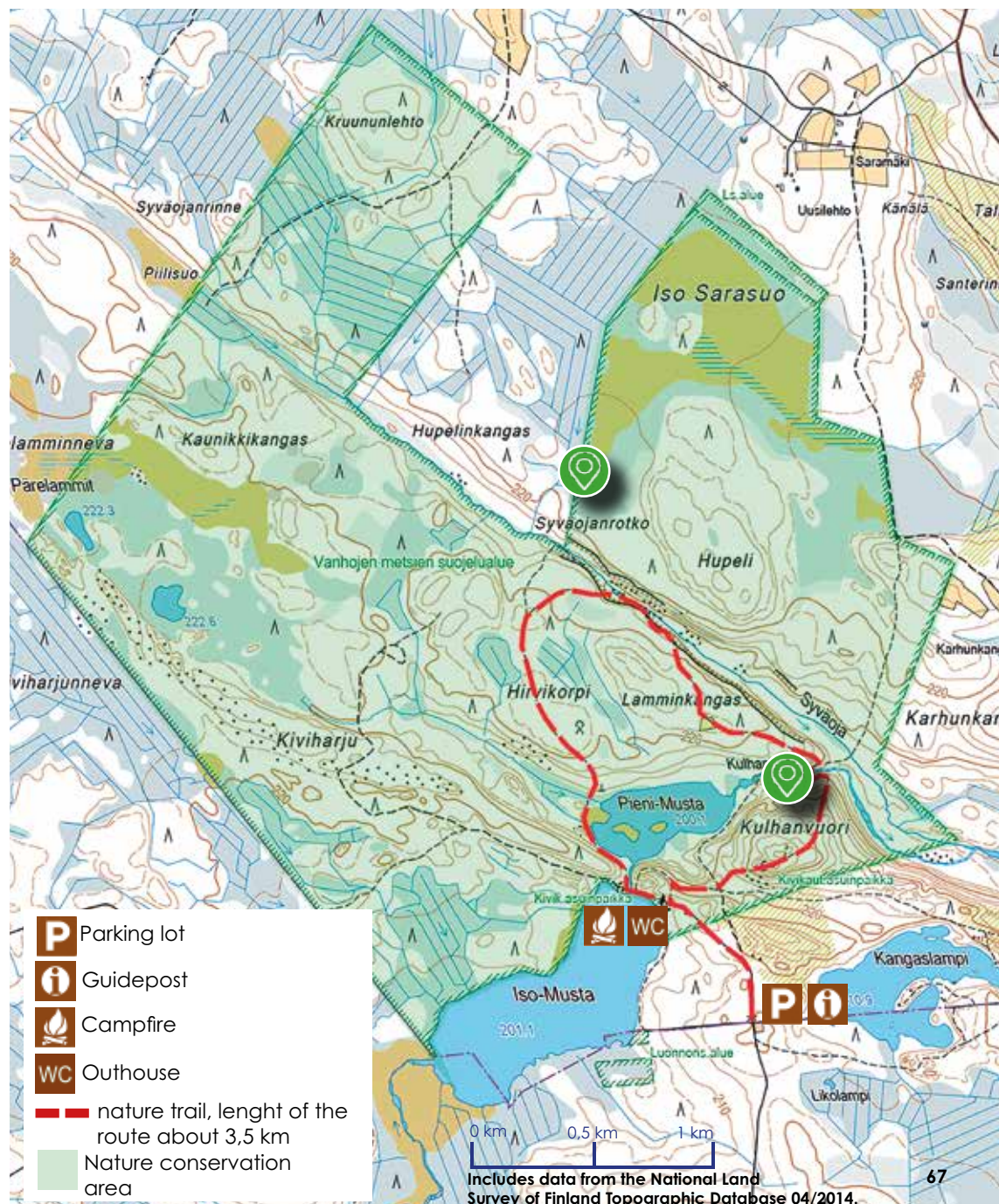
- 17 Lean-to and campfire place**
Riekkontie 138
43250 Kolkanlahti
- 18 Hut**
Saunajaakontie 43
43100 Saarijärvi
- 19 Lean-to and campfire place**
Vuosjoki
resting place
- 20 Hut**
Kourajärvi
resting place
- 6 Myllymäentie 1**
43100 Saarijärvi
- 7 Kannonkoskentie 8**
43100 Saarijärvi
- 8 Ranta-Hänniläntie 9**
43100 Saarijärvi
- 9 Lehtolantie 56**
43250 Kolkanlahti
- 10 Mahlunjärvi**
Myllymäentie 1266
43220 Mahlu
- 11 Luotonen Sammalinen**
Myllymäentie 2388
43440 Pylkönmäki
- 12 Iso-Lumpero**
Pyhäkoskentie 215
43100 Saarijärvi
- 13 Pyhäjärvi**
Saunajaakontie 43
43100 Saarijärvi
- 14 Pyhäjärvi**
Iisniementie 241
43100 Saarijärvi
- 15 Summasjärvi**
Summassaarentie 43
43130 Tarvaala
- 16 Summasjärvi, sahanranta**
Kiimasjärventie 51
41270 Lannevesi



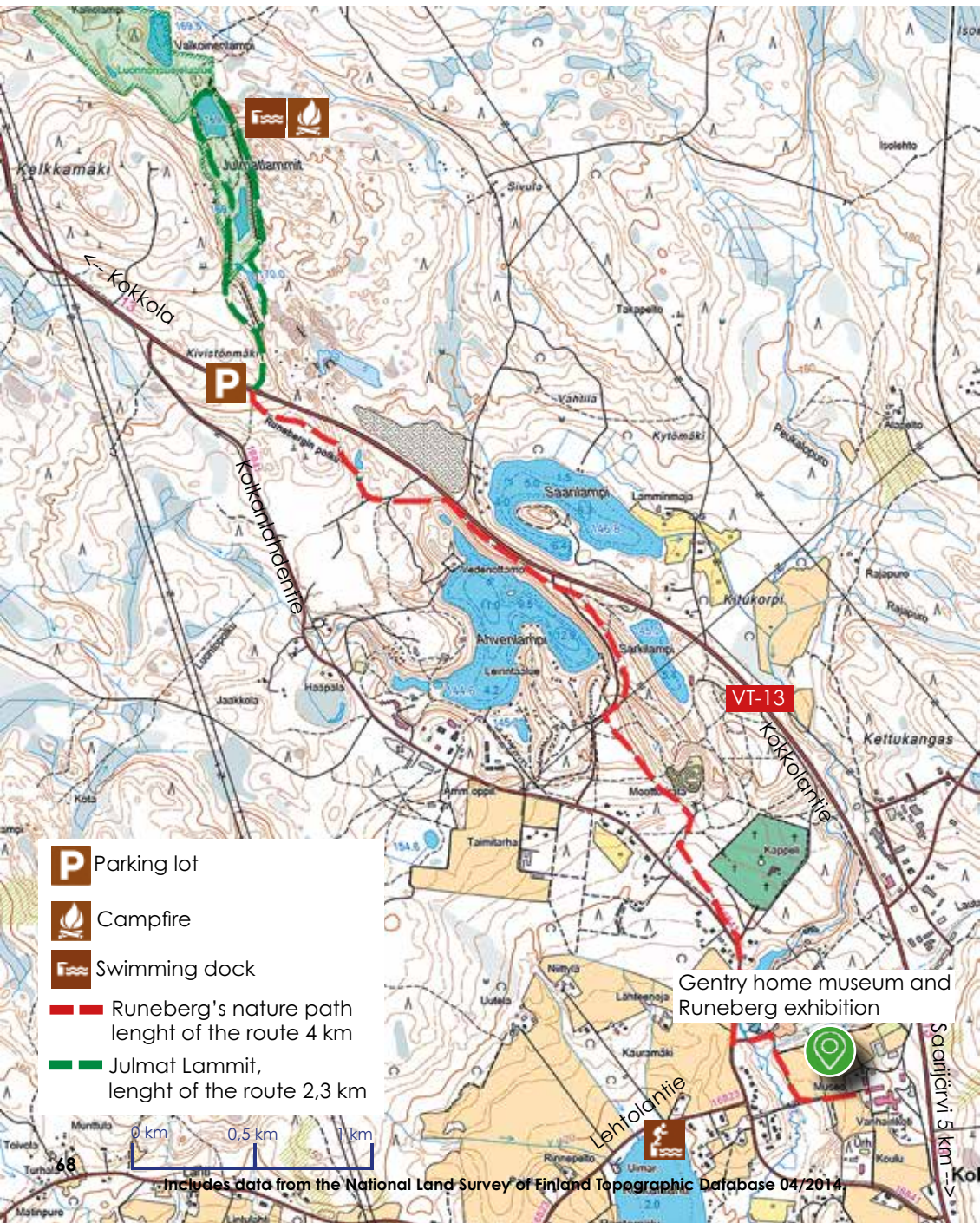
PYHÄ-HÄKKI NATIONAL PARK



KULHANVUORI JA SYVÄOJANROTKO



JULMAT LAMMIT, RUNEBERG'S NATURE PATH



HAIKANKÄRKI, ANCIENT NATURE PATHS





INTERESTED IN SAARIJÄRVI?

The City of Saarijärvi has plenty of plots on offer for those looking to build their own house. Our naturally beautiful lake landscapes offer pleasant surroundings for the whole family! There are housing plots in the city centre, in the vibrant villages, and at the housing area zoned by the shore of the Summasjärvi lake.

Most recently, the city of Saarijärvi has opened the new, pleasant **Lumperonharju** residential area close to the city center. The area offers easy and short connections both to the downtown services and to the specialty shops along the highway.

Lumperonharju plots: <https://saarijarvi.fi/asuminen-ja-ymparisto/myynnissa/>

One of the most appealing housing areas is in **Kotiniemi** by the shore of lake Summasjärvi. The area features building plots with private beaches in a peaceful rural landscape. The sizeable plots, some with private beaches, are located next to good traffic connections five kilometres from the city centre. Our diverse services are close by, as are several recreational trails.



Could Saarijärvi be your future home? Take a look at our new resident's info package at **kotiinmeille.fi**

Learn more about vacant building plots:

<https://saarijarvi.fi/asuminen-ja-ymparisto/myynnissa/>

044 459 8314 / head of land use OR 044 459 8406 / secretary of planning

TERVETULOA YRITTÄJÄKSI SAARIJÄRVELLE!

We will help you develop your business!

Whether you need advise on new ideas, investments, agribusiness, business trades, ownership changes, customer acquisition, internationalisation, or new partnerships.

We will advise you with all business-related issues all the way from the start! Don't hesitate to get in touch!

Director of Business Development

Jyrki Rahkonen, 040 581 5964, jyrki.rahkonen@saarijarvi.fi

Business Advisor Harri Uusisalo, 044 459 8452, harri.uusisalo@saarijarvi.fi

Project coordinator Mari Puranen, 040 351 1086, mari.puranen@saarijarvi.fi

Farm business advisor Marianne Reinikka, 040 183 7085, marianne.reinikka@jamk.fi

www.saarijarvenyrittyspalvelut.fi



SSYP Kiinteistöt Oy maintains and contracts commercial and business properties in the city centre and nearby areas.

Free commercial properties available at
www.ssyпкиinteistot.fi/vapaat-tilat

Executive Officer Olavi Nolte, 044 459 8294, olavi.nolte@ssyпкиinteistot.fi



INDUSTRIAL AND COMMERCIAL PLOTS IN THE CITY OF SAARIJÄRVI

Saarijärvi business plots include good options for both small operators and heavy industries. Plots are available for rent and sale. The plots are mainly situated in two areas by highway 13 in Kolkanlahti and Linnankylä, some seven kilometres from the centre of Saarijärvi. There are individual plots available closer to town.

<https://saarijarvi.fi/asuminen-ja-ymparisto/myynnissa/>



TOURIST INFORMATION



You can ask for more details and pick up brochures at the tourist information centres.

TAITOKESKUS SAARIJÄRVI

050 413 1013 / Paavontie 4

SAARIJÄRVI TOWN HALL

Sivulantie 11 (closed 24th June - 28th July)

SAARIJÄRVI TOURISM GUIDE DISTRIBUTION POINTS:

- Saarijärvi Town Hall, Sivulantie 11
- Taitokeskus Saarijärvi, Paavontie 4
- SEO Ranta-Kivi, Jyväskylältätie 34
- Café & Restaurant Linnan Liisa, Linnan yritystie 2.



Visit Saarijärvi

TOURISM SERVICES AT SAARIJÄRVI
Sivulantie 11 / PL 13, 43100 Saarijärvi
travel@saarijarvi.fi

www.visitsaarijarvi.fi



@visitsaarijarvi



TAG YOURSELF
TO SAARIJÄRVI
#annahetkenviedä
#visitsaarijärvi
#saarijärvi